

QUALITY
WITH
TRADITION

PRODUCT CATALOGUE

Roofs

Modular metal roofing tiles
Flat modular metal roofing tiles
Metal roofing tiles
Standing seam sheet metal PROFILE FL
KR roof panels
Trapezoidal sheet metal
Soffit board
Typical flashings

Roof accessories

Roof accessories and fasteners
Roof windows

NIAGARA gutter system

Facades

Trapezoidal sheet metal for facades
Facade panels
Facade ceiling tiles
Corrugated facade profiles

Structures

Cold-formed profiles
Trapezoidal sheet metal for structures
Wall cassettes
Steel battens

Sandwich panels

floriantentrum.com.pl

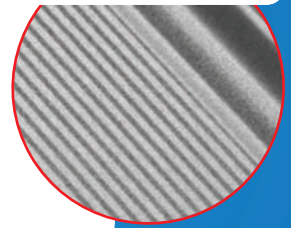
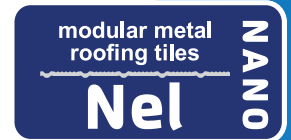
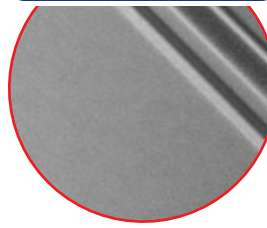
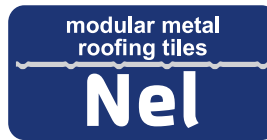




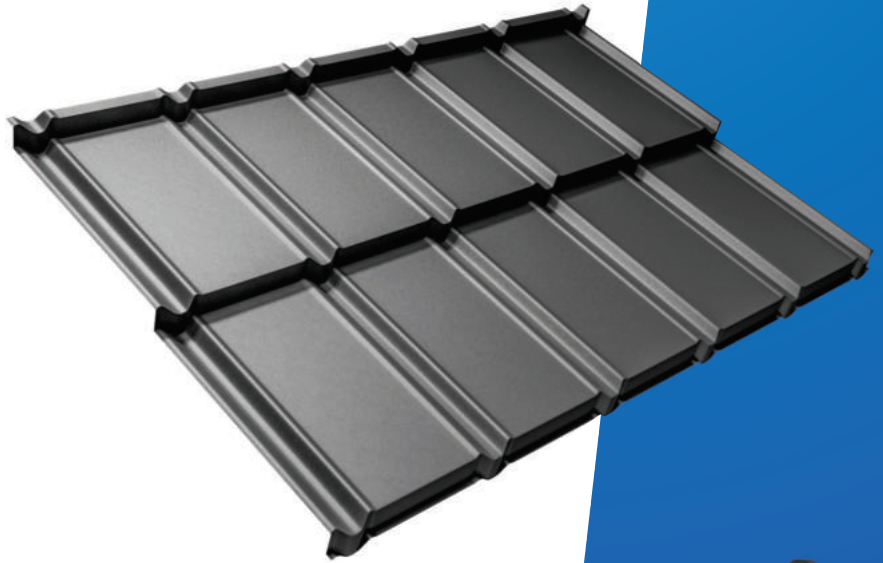
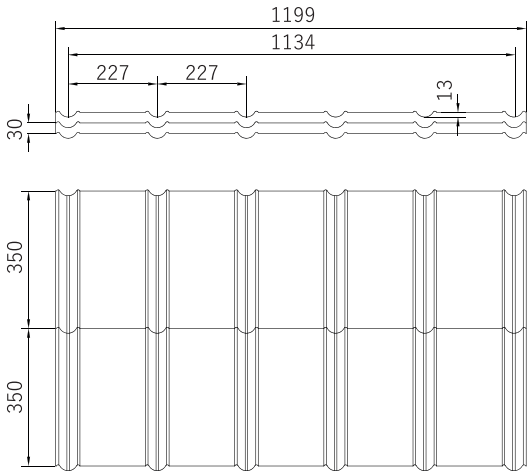
NEL MODULAR METAL ROOF TILE
RECOMMENDED BY



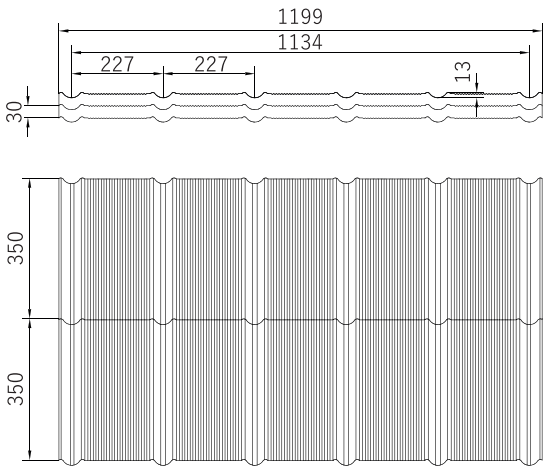
ASSEMBLY INSTRUCTIONS



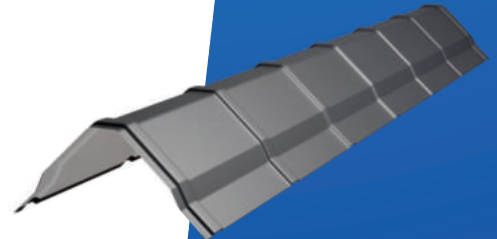
NEL – FK* modular metal roof tile



NEL NANO – FK* modular metal roof tile



Straight roof ridge PLUS
dedicated to Nel/Nel NANO
modular metal roofing tiles



	NEL modular metal roofing tiles	NEL NANO modular metal roofing tiles
module length [mm]	350	350
embossing height [mm]	30	30
profile height [mm]	13	13
usable width [mm]	1134	1134
total width [mm]	1199	1199
min. roof slope	20°	20°
protective coatings	ULTRAMAT, PURMAX**, PURLAK, PURMAT	ULTRAMAT, PURMAX**, PURLAK, PURMAT

Guarantee period for each coating – p. 59
** while supplies last

NEL MODULAR METAL ROOFING TILES – with a stylish, contemporary shape that gives buildings a touch of chic and elegance. The roofing material used in manufacture ensures high quality, comfort and safety guaranteed for up to 50 years. NEL is made of sheet metal coated with polyester and highly resistant polyurethane coatings: PURMAT or PURLAK.

The symmetrical shape of the roofing allows the sheet metal to be installed in both directions, which has an impact on the cost-effectiveness of roofing.

NEL metal roofing tiles meet the expectations of every demanding customer. Nel in the Nano version – the metal roof tile has been enriched with a surface profiling, known as nano-wave.

* manufactured in Kutno

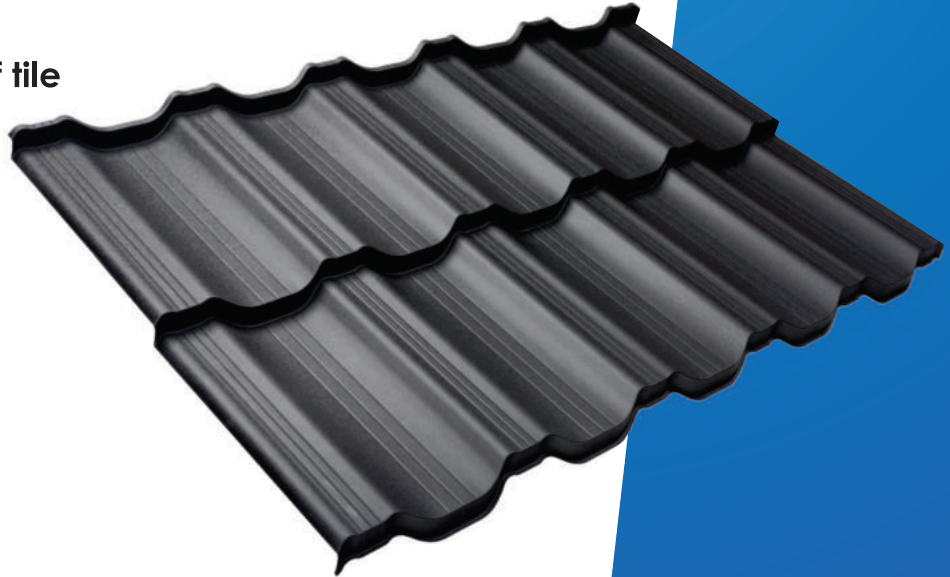
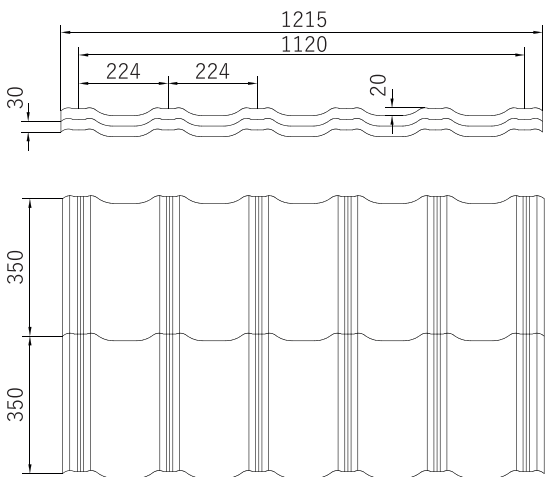


QUALITY WITH TRADITION

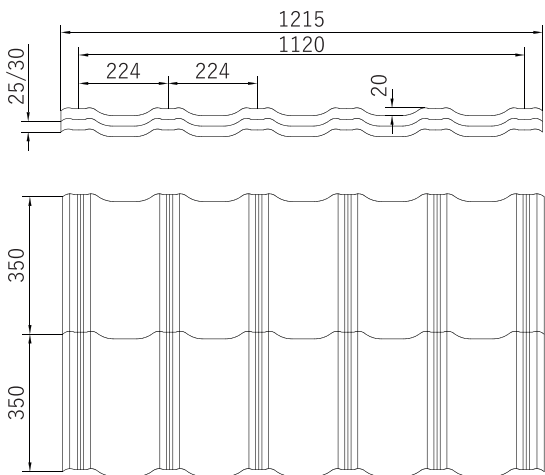
modular metal
roofing tiles
Finezja

metal roofing tiles
Finezja
max

FINEZJA – FK* modular metal roof tile



FINEZJA MAX – FK* cut-to-size metal roofing tiles



	FINEZJA modular metal roofing tiles	FINEZJA MAX cut-to-size metal roofing tiles
module length [mm]	350	350
embossing height [mm]	30	25/30
profile height [mm]	20	20
usable width [mm]	1120	1120
total width [mm]	1215	1215
min. roof slope	15°	9°
sheet length [mm]		min 720 max 5270
protective coatings	ULTRAMAT, PURMAX**, PURLAK, PURMAT	ULTRAMAT, PURMAX**, PURLAK, PURMAT

Guarantee period for each coating – p. 59
** while supplies last

FINEZJA MODULAR METAL ROOFING TILES – stand for reliability and originality. The interesting form and wide selection of colours and coatings of the metal roofing tiles make FINEZJA suitable for the most demanding customers. It is light and easy to install. It is frequently used by investors for complex roofing shapes. FINEZJA is also available in cut-to-size sheets – FINEZJA MAX.

* manufactured in Kutno

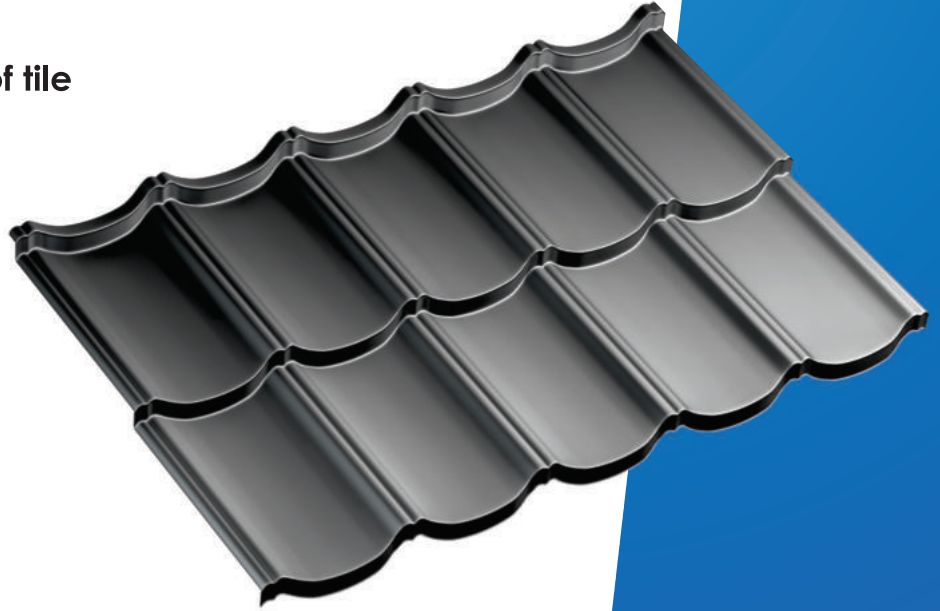
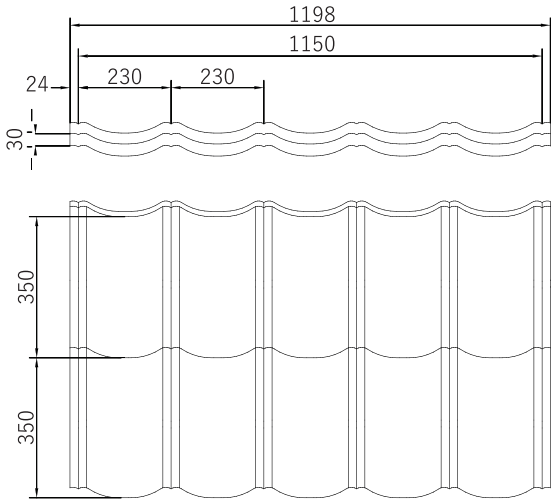
FINEZJA METAL ROOFING TILES



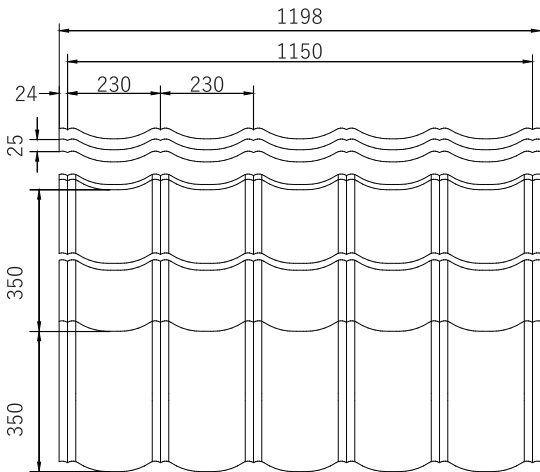
QUALITY WITH TRADITION



TAMARA – FK* modular metal roof tile



TAMARA MAX – FK* cut-to-size metal roofing tiles



	TAMARA modular metal roofing tiles	TAMARA MAX cut-to-size metal roofing tiles
module length [mm]	350	350
embossing height [mm]	30	25
profile height [mm]	25	25
usable width [mm]	1150	1150
total width [mm]	1198	1198
min. roof slope	15°	9°
sheet length [mm]		min 755 max 5305
protective coatings	PS, ULTRAMAT, PURMAX***, PURLAK, PURMAT	PS, PMG**, ULTRAMAT, PURMAX***, PURLAK, PURMAT

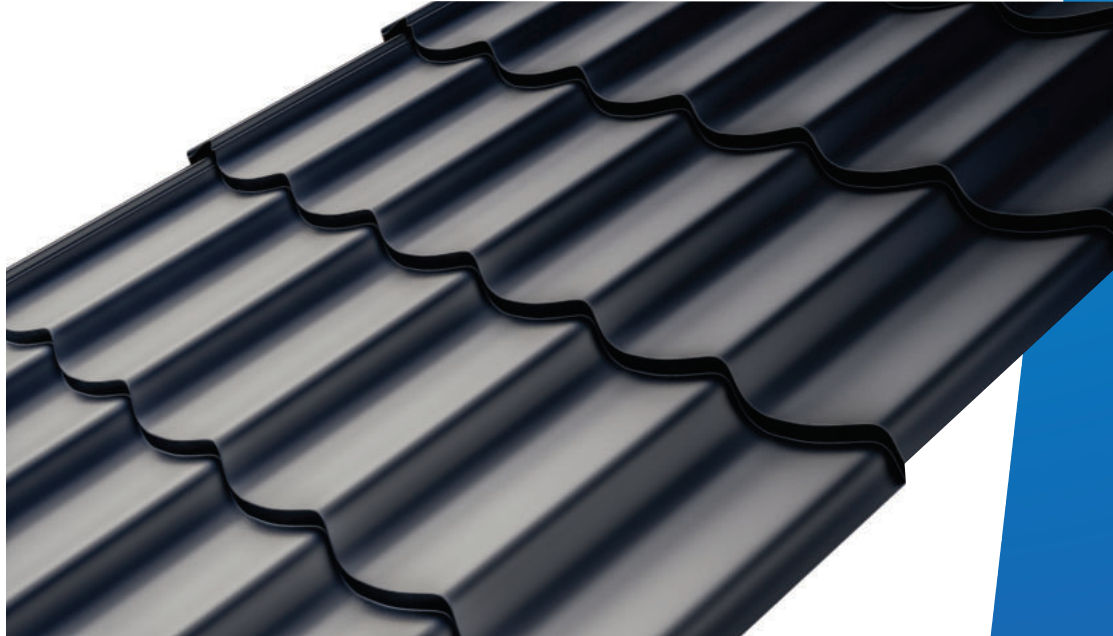
Guarantee period for each coating – p. 59
 ** availability of colours in PMG coating - to be confirmed
 *** while supplies last

TAMARA MODULAR METAL ROOF TILE – its shape resembles that of a ceramic tile. It is ideal for covering complex roof surfaces, guaranteeing a minimum amount of waste. Manufactured in polyurethane and polyester.

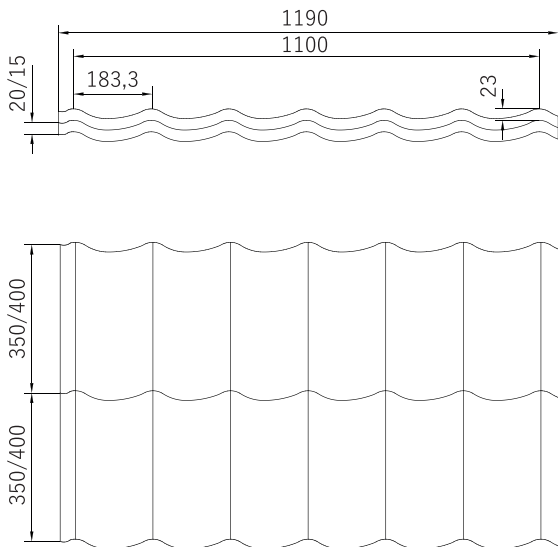
* manufactured in Kutno



QUALITY WITH TRADITION



KINGA – FK* cut-to-size metal roofing tiles



KINGA – cut-to-size metal roofing tiles	
module length [mm]	350/400
embossing height [mm]	20/15
profile height [mm]	23
usable width [mm]	1100
total width [mm]	1190
min. roof slope	9°
sheet length [mm]	for module 350 min 725 max 5275 for module 400 min 825 max 5225
protective coatings	PS, PMG**, ULTRAMAT, PURMAX***, PURLAK, PURMAT

Guarantee period for each coating – p. 59
 ** availability of colours in PMG coating - to be confirmed
 *** while supplies last

KINGA METAL ROOFING TILE – featuring a classic shape perfectly imitating traditional ceramic tiles. It is a high-quality roofing material available for every budget. The varnished coatings are available in the following versions: polyurethane (PURLAK and PURMAT), and polyester (gloss and ULTRAMAT). It is possible to apply anti-condensation non-woven fabric to the metal roofing tile.

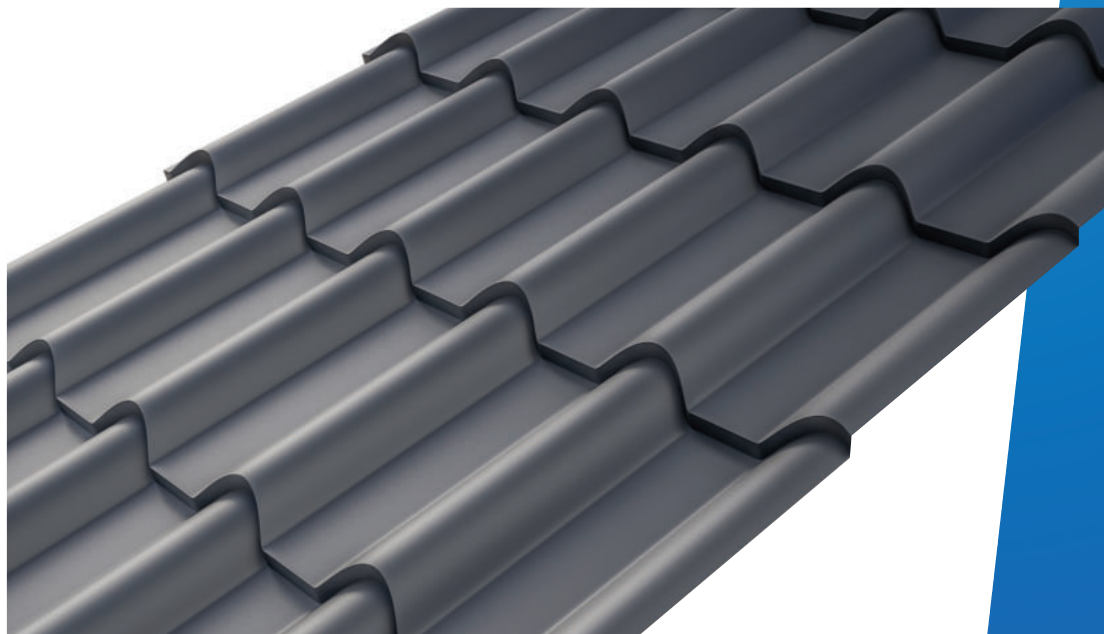
* manufactured in Kutno



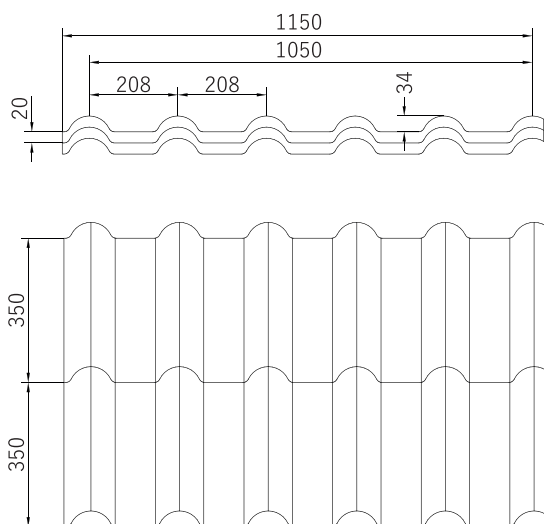
QUALITY WITH TRADITION

metal roofing tiles

Klara



KLARA – FK* cut-to-size metal roofing tiles



KLARA – cut-to-size metal roofing tiles	
module length [mm]	350
embossing height [mm]	20
profile height [mm]	34
usable width [mm]	1050
total width [mm]	1150
min. roof slope	9°
sheet length [mm]	min 724 max 5274
protective coatings	PS, PMG**, ULTRAMAT, PURMAX***, PURLAK, PURMAT

Guarantee period for each coating – p. 59

** availability of colours in PMG coating
- to be confirmed

*** while supplies last

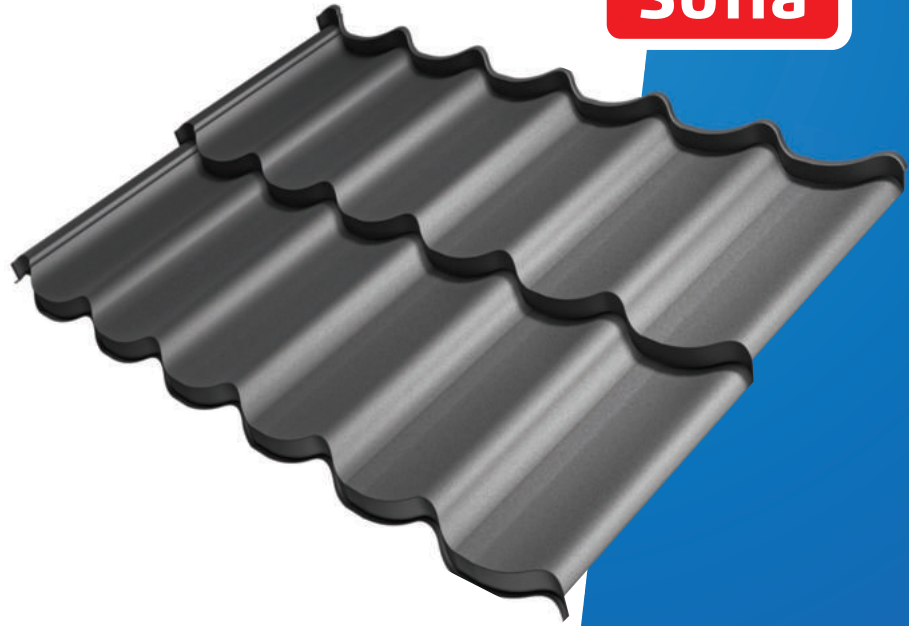
KLARA METAL ROOFING TILE – featuring a high profile, which makes it look beautiful on houses and other buildings. The offered varnished coatings are available in the following versions: PURLAK, PURMAT, coating and polyester gloss coatings, ULTRAMAT. KLARA guarantees an elegant design and many years of use.

* manufactured in Kutno

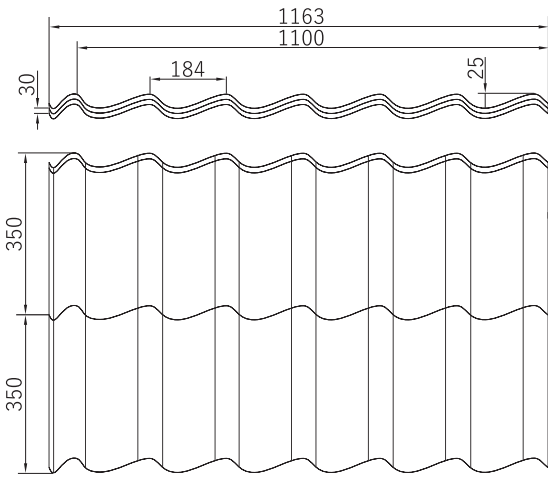
KLARA METAL ROOFING TILES



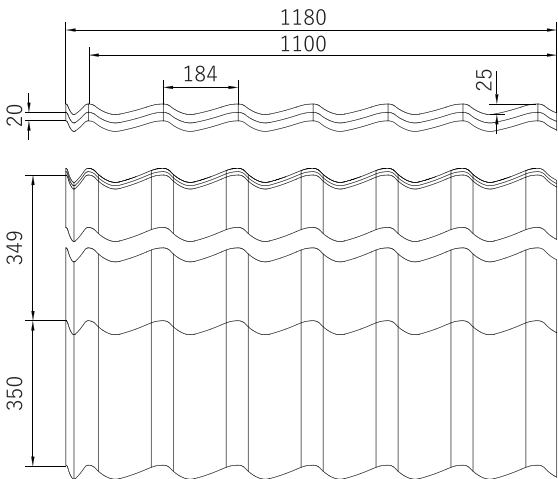
QUALITY WITH TRADITION



SOFIA – modular metal roofing tiles



SOFIA MAX – cut-to-size metal roofing tiles



	SOFIA MODULAR modular metal roofing tiles	SOFIA MAX cut-to-size metal roofing tiles
module length [mm]	350	350 lub 400
embossing height [mm]	30	15 lub 20
profile height [mm]	25	25
usable width [mm]	1100	1100
total width [mm]	1163	1180
min. roof slope	15°	9°
sheet length for module 350 [mm]		min 800 max 5000
sheet length for module 400 [mm]		min 900 max 5300
protective coatings	TOPMAT, ULTRAMAT, PURLAK, PURMAT	PS, PMG, ULTRAMAT, PURLAK, PURMAT

Guarantee period for each coating – p. 59

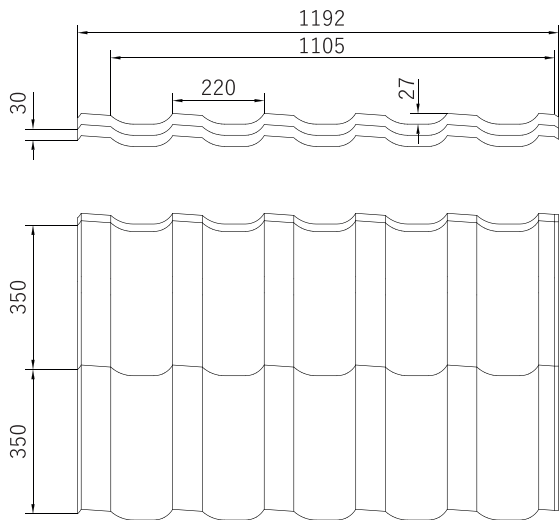
SOFIA MODULAR METAL ROOFING TILE – is a high quality roof covering available for every budget. It has a classic shape that is appreciated by many consumers. Therefore, in order to meet the expectations of our customers, we introduced a modular steel tile as a second product option. SOFIA is also available in cut-to-size sheets.



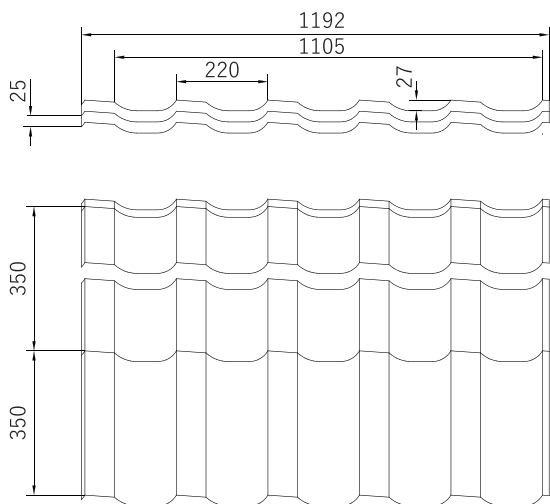
QUALITY WITH TRADITION



ROZALIA – modular metal roofing tiles



ROZALIA MAX – cut-to-size metal roofing tiles



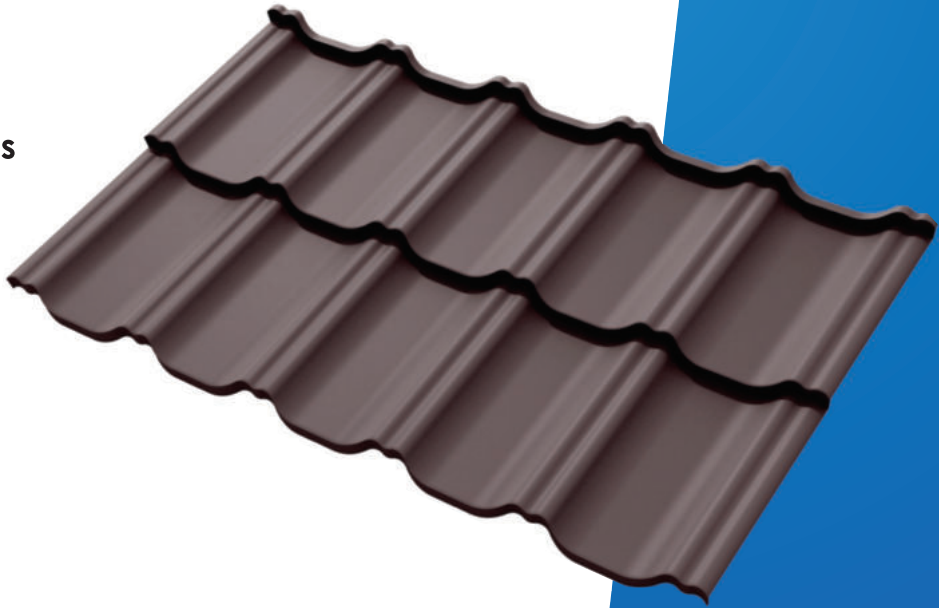
	ROZALIA MODULAR modular metal roofing tiles	ROZALIA MAX cut-to-size metal roofing tiles
module length [mm]	350	350
embossing height [mm]	30	25
profile height [mm]	27	27
usable width [mm]	1105	1105
total width [mm]	1192	1192
min. roof slope	15°	9°
sheet length [mm]		min 755 max 5305
protective coatings	PS, TOPMAT ULTRAMAT, PURLAK, PURMAT	PS, PMG, ULTRAMAT, PURLAK, PURMAT

Guarantee period for each coating – p. 59

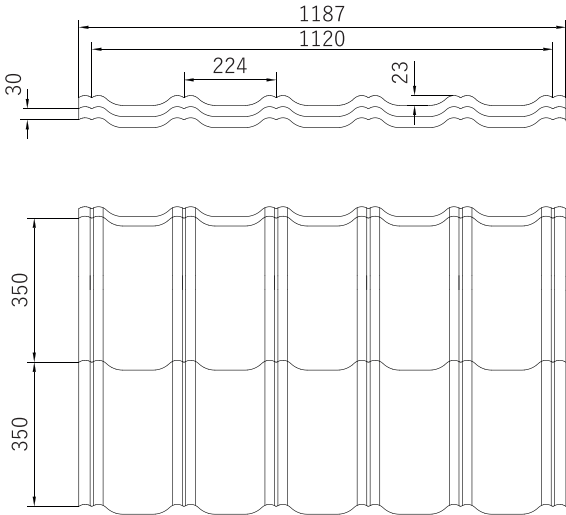
ROZALIA MODULAR METAL ROOFING TILE is a single- or double-module roofing tile. It has an interesting shape and original embossing. Manufactured in polyurethane and polyester. ROZALIA is also available in cut-to-size sheets – ROZALIA MAX.



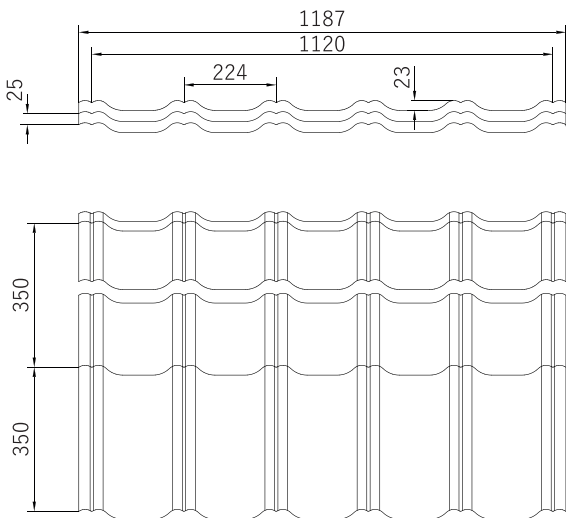
QUALITY WITH TRADITION



LIDIA – modular metal roofing tiles



LIDIA MAX – cut-to-size metal roofing tiles



	LIDIA modular metal roofing tiles	LIDIA MAX cut-to-size metal roofing tiles
module length [mm]	350	350
embossing height [mm]	30	25
profile height [mm]	23	23
usable width [mm]	1120	1120
total width [mm]	1187	1187
min. roof slope	15°	9°
sheet length [mm]		min 755 max 5305
protective coatings	PS, TOPMAT, ULTRAMAT, PURLAK, PURMAT	PS, PMG, ULTRAMAT, PURLAK, PURMAT

Guarantee period for each coating – p. 59

LIDIA MODULAR METAL ROOFING TILE – a classic shape with a modern twist. Manufactured in one or two modules. Available in all colours and coatings from the company’s offer. LIDIA is also available in cut-to-size sheets – LIDIA MAX.

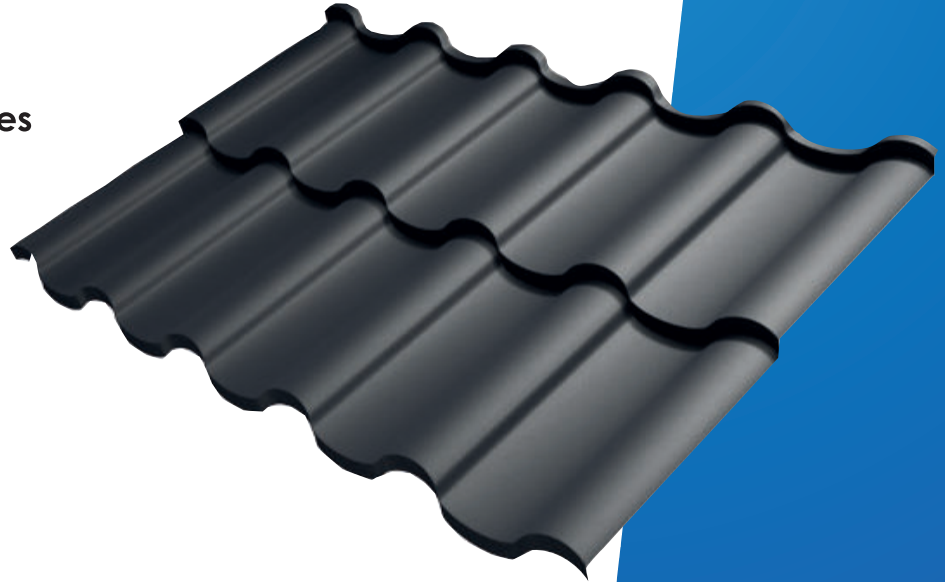
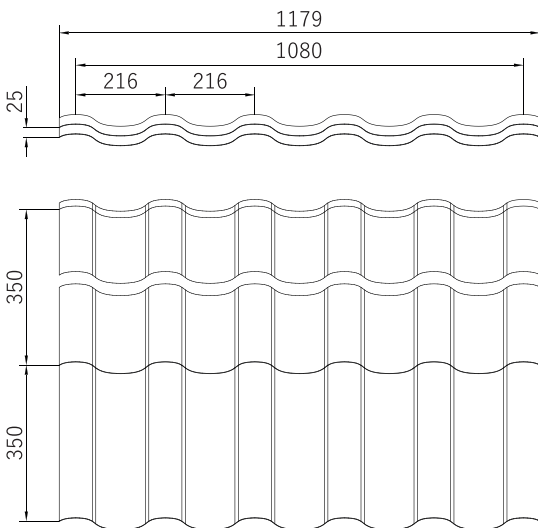
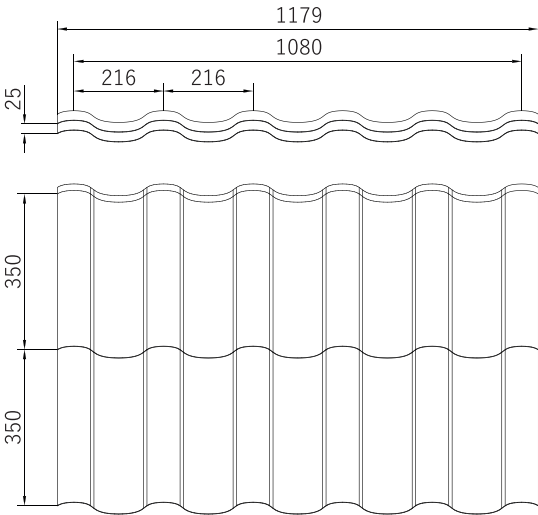


QUALITY WITH TRADITION

metal roofing tiles
modular
Maja

metal roofing tiles
Maja
max

MAJA – modular metal roofing tiles



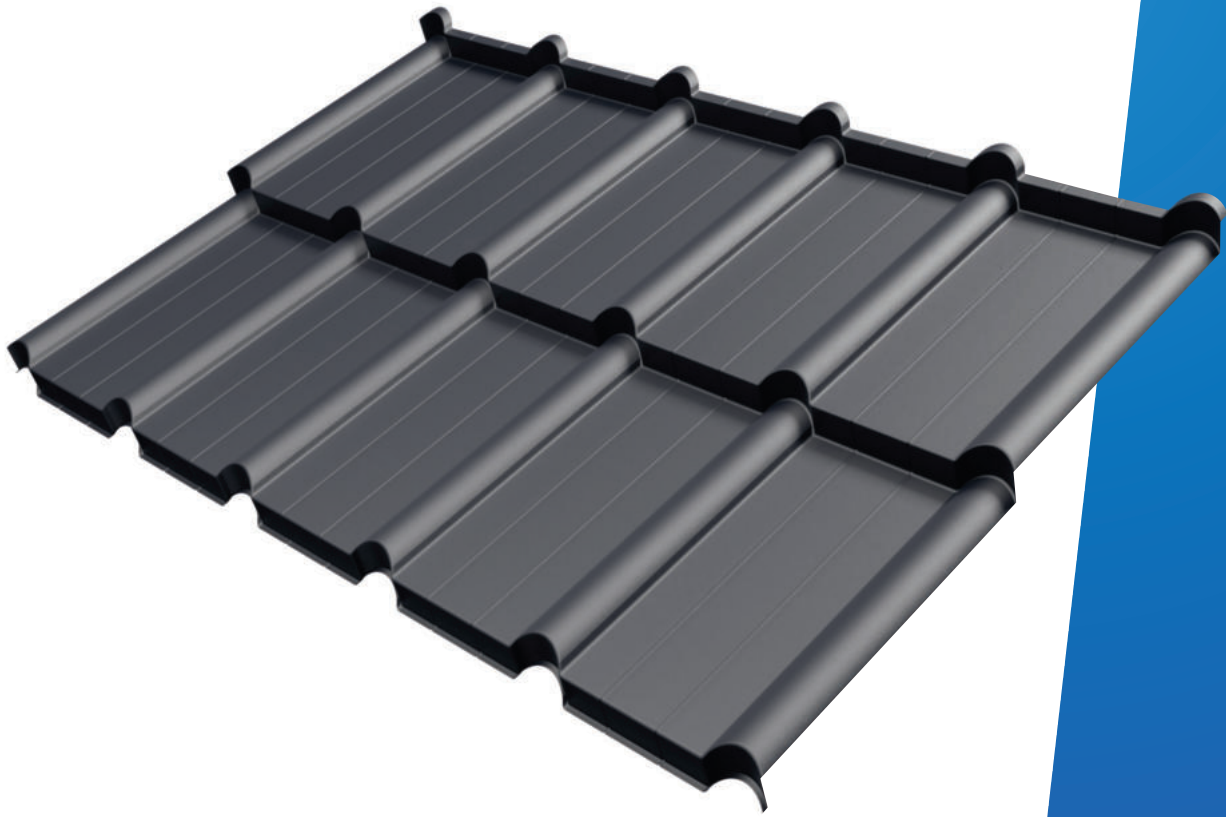
	MAJA modular metal roofing tiles	MAJA MAX cut-to-size metal roofing tiles
module length [mm]	350	350
embossing height [mm]	25	25
profile height [mm]	35	35
usable width [mm]	1080	1080
total width [mm]	1179	1179
min. roof slope	15°	9°
sheet length [mm]		min 765 max 5315
protective coatings	PS, TOPMAT, ULTRAMAT, PURLAK, PURMAT	PS, PMG, ULTRAMAT, PURLAK, PURMAT

Guarantee period for each coating – p. 59

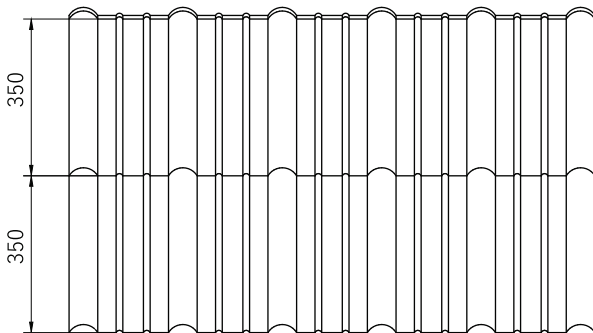
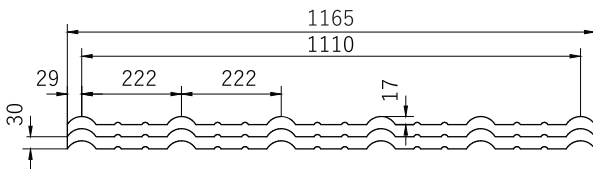
MAJA MODULAR METAL ROOFING TILE – has high water absorption, which ensures rigidity. Available in the form of one- and two-module panels, in polyester and polyurethane. MAJA is also available in cut-to-size - MAJA MAX.



QUALITY WITH TRADITION



FREJA – modular metal roofing tiles

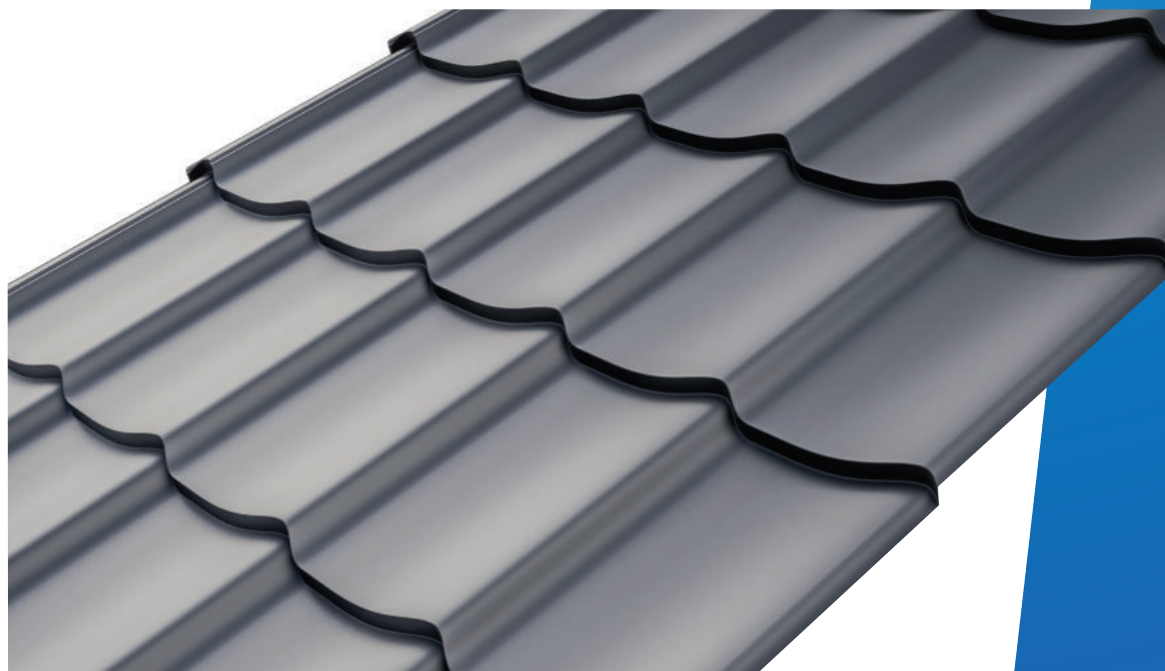


FREJA – modular metal roofing tiles	
module length [mm]	350
embossing height [mm]	30
profile height [mm]	17
usable width [mm]	1110
total width [mm]	1165
min. roof slope	25°
protective coatings	PS, ULTRAMAT, TOPMAT, PURLAK, PURMAT

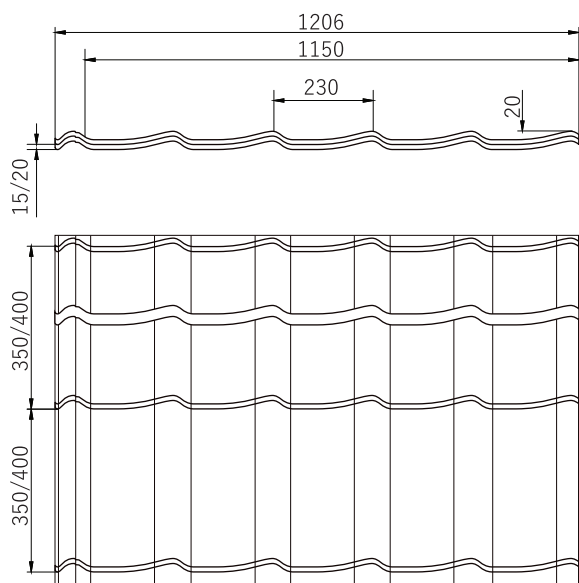
* Guarantee period for each coating – p. 59

FREJA METAL ROOFING TILE – dedicated to investors who appreciate classic motifs with a modern twist. In our search for new solutions and following current trends, we have created a model that fits perfectly into the Scandinavian style. The name of the metal roofing tile comes from the Nordic goddess Freyja, whose name meant development and magic. FREJA gives the roof a modern look and impresses with its light form.





RÓZA – cut-to-size metal roofing tiles



RÓZA – cut-to-size metal roofing tiles	
module length [mm]	350/400
embossing height [mm]	15/20
profile height [mm]	20
usable width [mm]	1150
total width [mm]	1206
min. roof slope	9°
sheet length [mm]	for module 350 min 800 max 5000 for module 400 min 900 max 5300
protective coatings	PS, PMG, ULTRAMAT, PURLAK, PURMAT

Guarantee period for each coating – p. 59

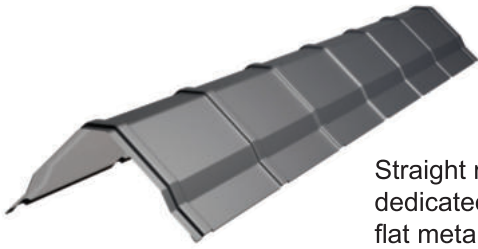
RÓZA ROOFING TILE – has an aesthetic shape and excellent performance parameters – the covering width of the sheet is 1150 mm. The roofing tile looks great in modern buildings as well as on houses kept in a traditional style.



QUALITY WITH TRADITION

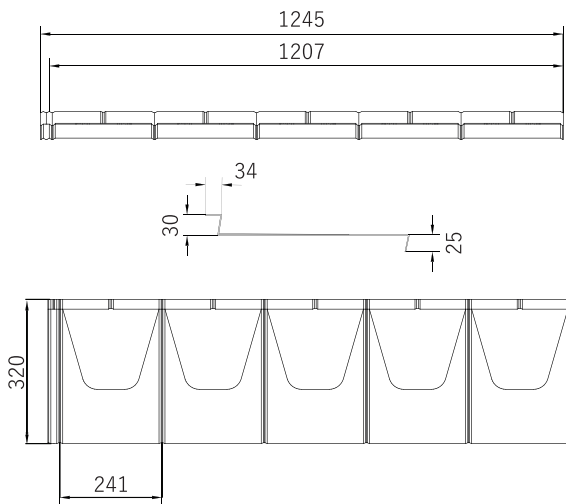
metal roofing tiles flat
Ida

metal roofing tiles flat
Ida PLUS

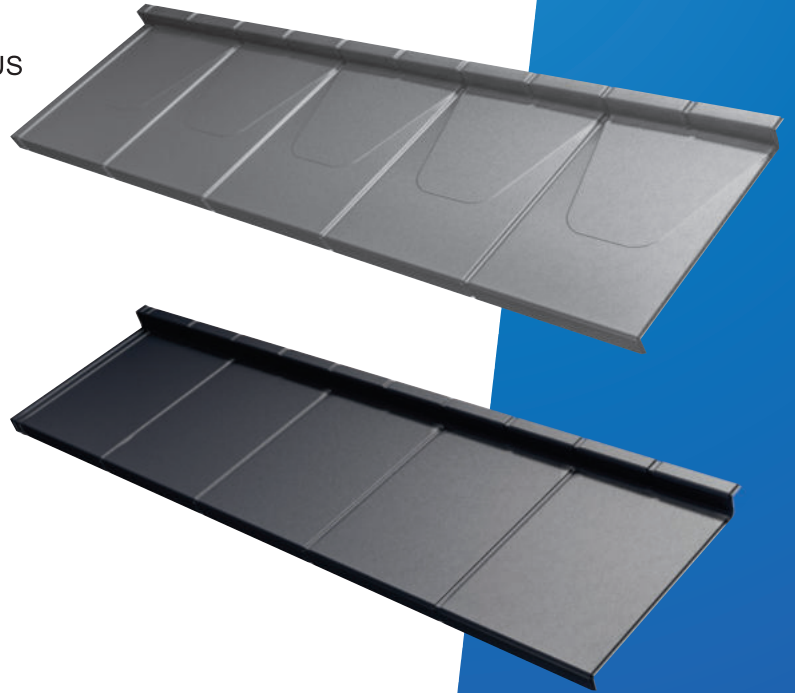
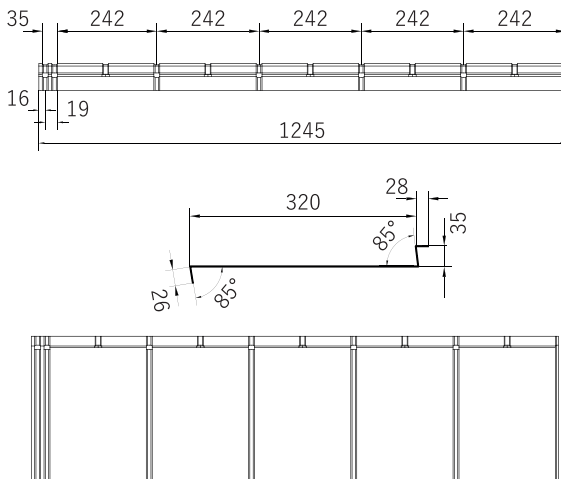


Straight roof ridge PLUS dedicated to IDA/IDA PLUS flat metal roofing tiles

IDA – flat metal roofing tile



IDA PLUS – flat metal roofing tile



	IDA flat metal roofing tile	IDA PLUS flat metal roofing tile
module length [mm]	320	320
embossing height [mm]	30	35
profile height [mm]	3	3
usable width [mm]	1207	1210
total width [mm]	1245	1245
min. roof slope	25°	25°
protective coatings	PURMAT, BLACKMAT	PURMAT BLACKMAT

Guarantee period for each coating – p. 59

NEW
colour: BLACKMAT
Coating – POLYESTER
Coating thickness – 45 µm

IDA and IDA PLUS METAL ROOFING TILES – have a shape that emphasises the simple yet modern form of the roof, which has recently become fashionable in construction. They are light and cost-effective. They are widely used in new buildings as well as in roof renovations. Available in PURMAT and BLACKMAT coatings.

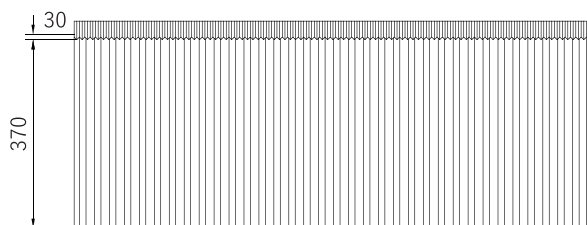
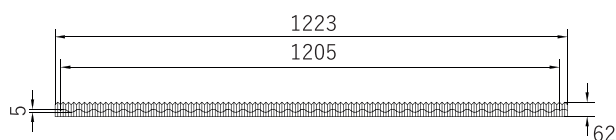


QUALITY WITH TRADITION



Straight roof ridge PLUS
dedicated to
single-module RITA

RITA – single-module metal roofing tile



RITA – single-module metal roofing tile	
module length [mm]	370
embossing height [mm]	34
profile height [mm]	5
usable width [mm]	1205
total width [mm]	1223
min. roof slope	25°
protective coatings	PURLAK, PURMAT, BLACKMAT

Guarantee period for each coating – p. 59

NEW

colour: BLACKMAT
Coating – POLYESTER
Coating thickness – 45 µm

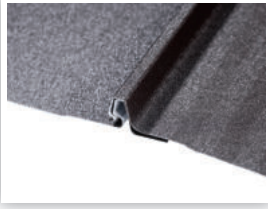
RITA ROOF COVERING – imitates the pattern of wood shingles. The characteristic shape of RITA gives lightness and an extraordinary look to buildings made in traditional wooden technology. Manufactured in polyurethane and BLACKMAT coatings, available in a wide range of colours.



QUALITY WITH TRADITION

Profil FL

PANEL CONNECTION



If disassembly is necessary, the new connection allows the panels to be disconnected without damage.

MOUNTING STRIP

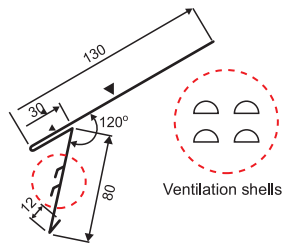


The panels have a strip with pre-drilled holes, allowing them to be attached directly to the structure.

UNDER-RIDGE STRIP



DRIP EDGE FLASHING

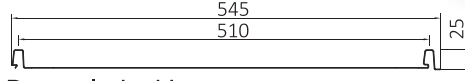


PHOTOVOLTAIC BRACKET



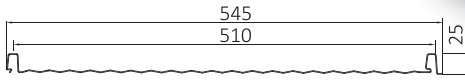
NEW
colour: BLACKMAT
Coating – POLYESTER
Coating thickness – 45 µm

FL-510 SP płaska



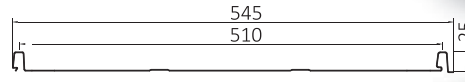
P-panel płaski

FL-510 SF fala



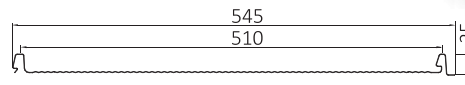
F-panel z mikrofalą

FL-510 ST trapez



T-panel z mikrotrapezem

FL-510 NANO



N-panel z nanofalą

	FL PROFILE
usable width [mm]	510
seam height [mm]	25
max. recommended sheet length [m]	nano-wave and micro-wave – 9
	micro-trapezoid – 7
	smooth – 5
min. sheet length [m]	0.5
min. roof slope	8°
sheet thickness [mm]	0.5/0.7
protective coatings	PS, ULTRAMAT, PURLAK, PURMAT BLACKMAT
application	roof covering with min. slope of 8° (14%)

Guarantee period for each coating – p. 59

Standing seam sheet metal is one of the oldest technologies used in construction. We offer a modern solution in the traditional shape of a standing seam sheet metal that has been known for years. The panels are connected with a click without the need to fold the seam. Each panel has pre-drilled installation holes for easy attachment to the structure. Machine-cut locks (optional for panels FL-510 SR, FL-510 ST, FL-510 SF, FL-510 NANO*) allow for installation on a starting strip.



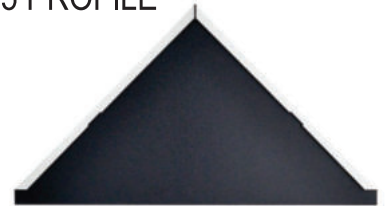
KR 245 PROFILE
starting



KR 345 PROFILE
starting



KR 555 PROFILE
starting



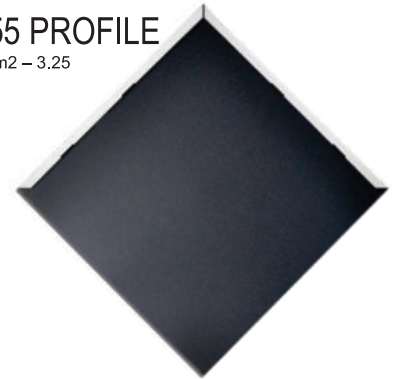
KR 245 PROFILE
quantity / m² – 16.67



KR 345 PROFILE
quantity / m² – 8.4



KR 555 PROFILE
quantity / m² – 3.25



INSTALLATION CLIPS
mounting bracket



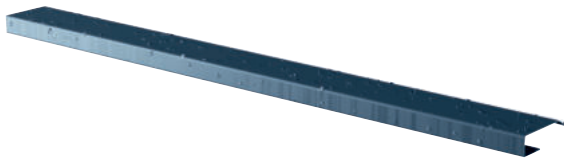
KR PROFILE	
Panel dimensions [mm]	555x555
	345x345
	245x245
sheet thickness [mm]	0.5
min. roof slope	22°
installation method	With mounting brackets (installation clips) on solid boarding
protective coatings	PS, PMG, PURMAT
accessories	screws, seals, sealing flanges, mouldings, touch-up paint

Guarantee period for each coating – p. 59

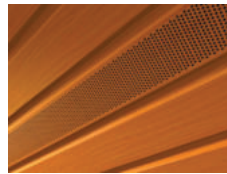
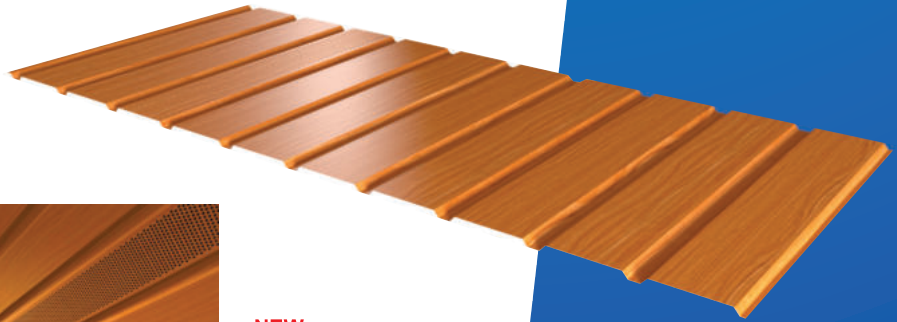
KR profiles are installed on fully boarded roofs using roof valley flashing installation clips. KR profiles are available in glossy and coarse-grained matt polyester coatings and in PURMAT polyurethane coating. They can be made in any other coating and colour from the offer. The interesting shape of this coating ensures that the entire building will have a unique character. KR PROFILE looks great as a chimney casing and facade cladding.

podbitka
z perforacją

TP 7P



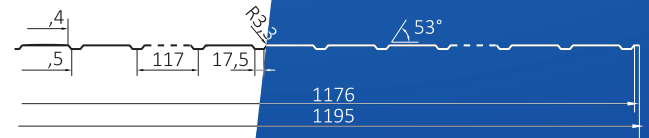
The J-shaped strip allows for easy insertion of the soffit panel. This enhances the aesthetic finish of the eaves.



NEW

colour: BLACKMAT
Coating – POLYESTER
Coating thickness – 45 µm

TP 7P SOFFIT BOARD	
profile height [mm]	7
usable width [mm]	1176
total width [mm]	1195
max. recommended sheet length [m]	6
sheet thickness [mm]	0.5 / 0.7
sheet length [mm]	≠0.5 – 6000 ≠0.7 – 7000
colours available off-the-shelf	golden oak walnut PMG-(RAL 7016iR033) ULTRAMAT, BLACKMAT

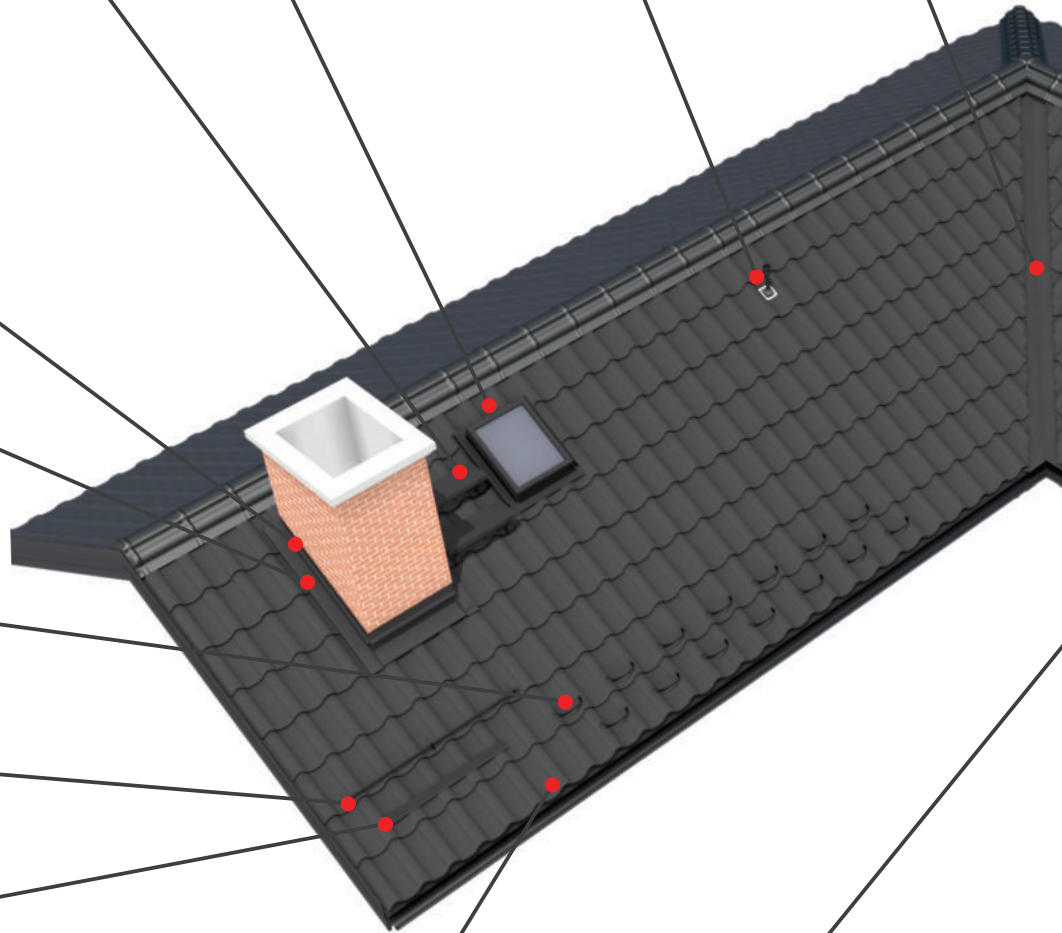
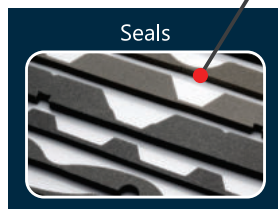
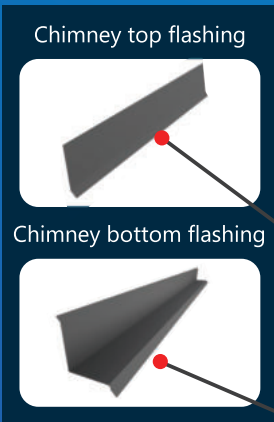


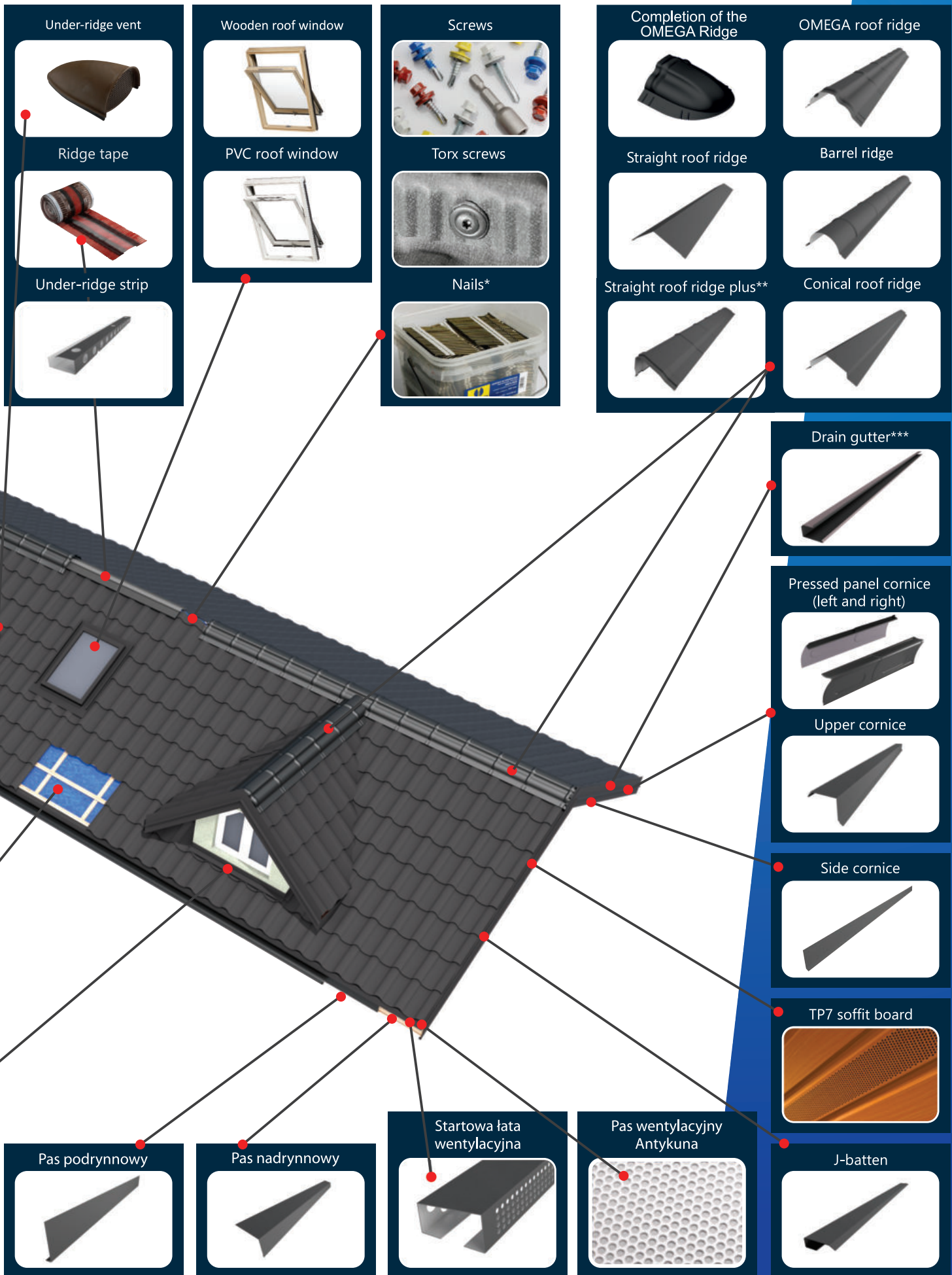
EXAMPLE OF POSSIBLE PERFORATION



Guarantee period for each coating – p. 55

TP 7P perforated trapezoidal metal soffit is a solution that has all the advantages to replace the customary PVC soffits used. Among the many advantages of this product are: the possibility to match the colour perfectly to the roofing colour, no rippling and better rigidity than plastic, resistance to ageing and discolouration, ease of installation, and the possibility to order in custom sizes.





*for use with RITA roof panel

***dedicated to pressed panel cornice

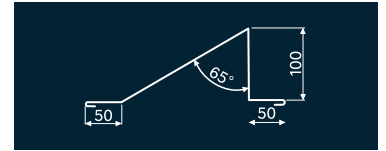
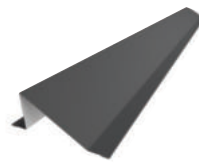
**dedicated to NEL modular metal roofing tiles

FINISHING AND ROOF ACCESSORIES

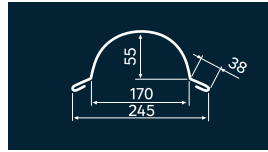
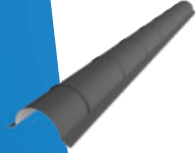
FK RIDGE TILE



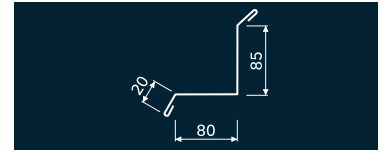
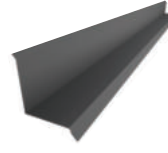
FK SNOW BARRIER



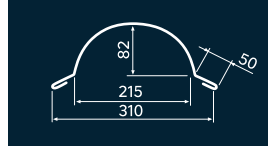
BARREL ROOF RIDGE SMALL



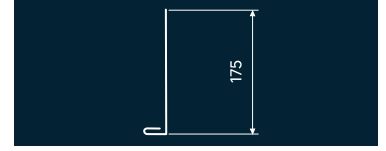
FK WALL FLASHING



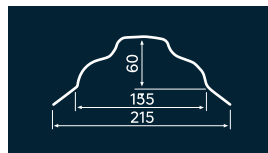
BARREL ROOF RIDGE LARGE



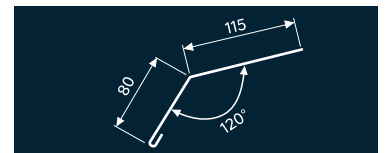
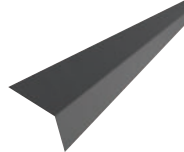
FK GUTTER FLASHING



BARREL OMEGA SMALL

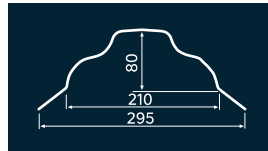


FK DRIP EDGE FLASHING

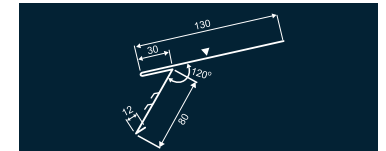
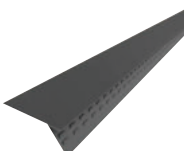


NEW!

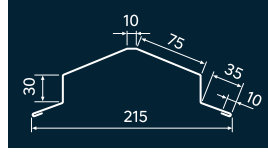
BARREL OMEGA LARGE



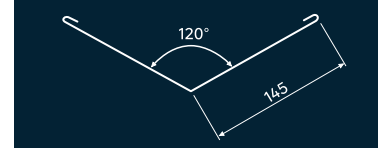
DRIP EDGE FLASHING TO FL PROFILE



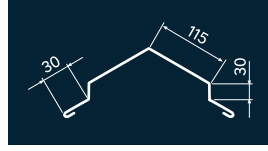
FK TRAPEZOIDAL RIDGE TILE



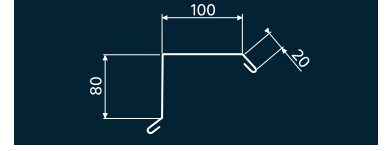
VALLEY GUTTER FK TILE



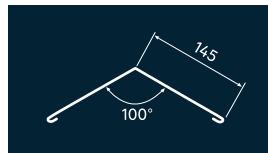
FK CONICAL ROOF RIDGE



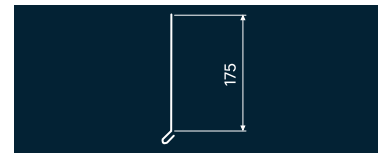
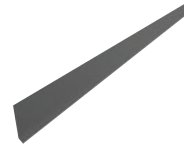
FK UPPER CORNICE



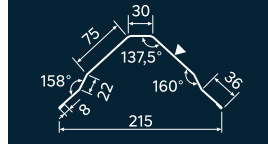
FK ROOF RIDGE



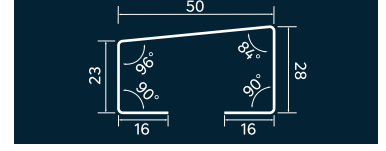
FK SIDE CORNICE



STRAIGHT ROOF RIDGE PLUS

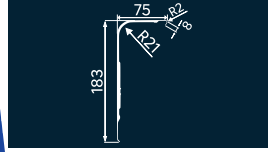


STEEL VENTILATION BATTEN



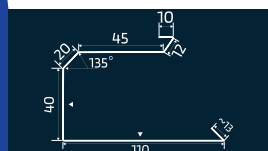
MODULAR CORNICE PRESSED

in 2 and 5 module versions
2 modules
5 modules
PURMAT: RAL7016, R033
TOPMAT: RAL 7016, RAL R033

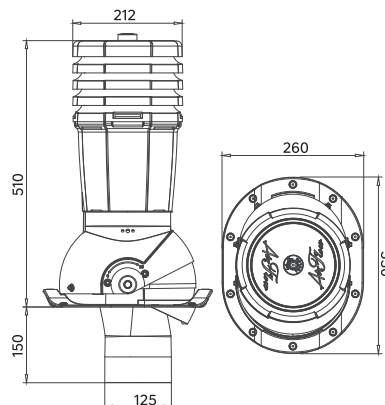


DRAIN GUTTER

required for installation of modular cornice
length - 2 m
PURMAT: RAL 7016, R033
TOPMAT: RAL 7016, RAL R033



ventilation chimney pot - AIR FLOW	
material	solid-coloured polypropylene with UV stabilisation.
Ventilation pipe diameter	125 mm/160 mm
chimney pot weight	2000g (version without additional insulation)
inclination angle adjustment in relation to the roof	0–55°



CATWALK FOR METAL ROOFING TILES



CHIMNEY STRIP



UNDER RIDGE VENT



CATWALK FOR SEAM PANELS



SEALING FLANGE



SNOW CATCHER



MEMBRANE



'FARMER' SELF-DRILLING SCREWS for wooden surfaces
reduced drilling point | drilling capacity: 2.5mm | washer: steel/EPDM | colour: RAL
size: 4.8x35 mm | use: 6–8 pcs./m²



'PREMIUM' SELF-DRILLING SCREWS for wooden surfaces (30-year guarantee)
reduced drilling point | drilling capacity: 2.5mm | washer: steel/EPDM | colour: RAL
4 layers of corrosion protection | size: 4.8x35 mm | use: 6–8 pcs./m²



'TORX' SELF-DRILLING SCREWS for wooden surfaces
reduced drilling point | drilling capacity: 2.5mm | washer: steel/EPDM |
colour: RAL | size: 4.8x35 mm | use: 6–8 pcs./m²



OCW SELF-DRILLING SCREWS for connecting sheet metal and thin structures
reduced drilling point | drilling capacity: 2.5mm | washer: steel/EPDM |
colour: RAL | size: 4.8x19 mm | use: 6–8 pcs./m²



OC SELF-DRILLING SCREWS for connecting sheet metal and thin structures
drilling capacity: up to 6.0 mm | washer: steel/EPDM | colour: RAL
size: 5.5x25 to 55 mm | use: 4–6 pcs./m²



ON SELF-DRILLING SCREWS for construction
drilling capacity: up to 12.0 mm | washer: steel/EPDM | colour: RAL
size: 5.5x32 to 38 mm | use: 4–6 pcs./m²



OC-55/63 SELF-DRILLING SCREWS for installing sandwich panels
drilling capacity: up to 6.0 mm | washer: steel/EPDM | colour: RAL
size: 55/63x80 to 280 mm | use: 1–2 pcs./m²



ON-55/63 SELF-DRILLING SCREWS for installing sandwich panels
drilling capacity: up to 12.0 mm | washer: steel/EPDM | colour: RAL
size: 55/63x80 to 280 mm | use: 1–2 pcs./m²



ROOF ACCESSORIES

GOLD+ PVC ROOF WINDOW

The GOLD + PVC roof window is the most advanced window made of PVC reinforced with an aluminium profile, guaranteeing durability and protection against moisture, making it an excellent choice for kitchens and bathrooms. The window is easy to install and each package contains step-by-step instructions.

Dimensions: 66x118 | 78x118 | 78x140

SILVER PVC ROOF WINDOW

The window with reinforced aluminium PVC profile guarantees durability and protection against moisture – ideal for the kitchen or bathroom. Exceptional protection against water penetration – watertightness class E1500. The built-in ventilation diffuser with grille prevents insects from entering and

Dimensions: 66x118 | 78x118 | 78x140

SILVER PVC ROOF WINDOW

The window with reinforced aluminium PVC profile guarantees durability and protection against moisture – ideal for the kitchen or bathroom. Exceptional protection against water penetration – watertightness class E1500. The built-in ventilation diffuser with grille prevents insects from entering and

Dimensions: 66x118 | 78x118 | 78x140

SILVER ROOF WINDOW

This is a wooden window made of selected pine wood. The built-in ventilation diffuser with grille prevents insects and dust from entering while ventilating the room. The window is protected by a double layer of varnish.

Dimensions: 66x118 | 78x118 | 78x140

BRONZE ROOF WINDOW

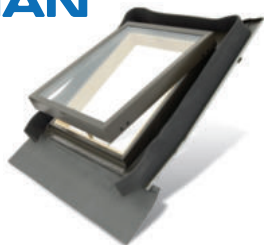
A wooden window made of selected pine wood. The main features of BRONZE windows are their resistance to difficult weather conditions such as downpours, hail and heavy snowfall thanks to the tempered outer window pane and optimal air circulation thanks to its two positions

Dimensions: 55x78 | 78x118 | 78x140

AURA to linia okien wytwarzana przez doświadczonego skandynawskiego producenta według konkretnej specyfikacji wyłącznie dla naszej firmy. Naszym klientom oferujemy 3 rodzaje okien: luksusowe drewniane GOLD+ oraz GOLD+PVC, bardzo dobre drewniane i PCV z linii SILVER oraz ekonomiczną wersję BRONZE. Ponadto w naszej ofercie znajdują Państwo również wyłazy dachowe oraz wszystkie potrzebne akcesoria.



ROOF HATCH



The roof hatch is designed for unused and unheated rooms. The integrated flange ensures perfect sealing and easy installation in all types of roofing. The AURA roof hatch can be installed in houses with a slope of 15 to 60 degrees. Sealed glass unit 14 mm (3-8-3). Two opening options: upwards or sideways.

Dimensions: 45x73

FLANGES FOR ROOF WINDOWS

The flange ensures easy installation and a completely tight window. The flanges are made of aluminium and painted the same grey colour as the window. The flanges are resistant to weather conditions and UV radiation, and their tightness has been tested according to the most rigorous standards

FLAT

symbol	dimensions
KPS GP 55x78	55x78
KPS GP 55x98	55x98
KPS GP 66x118	66x118
KPS GP 78x98	78x98
KPS GP 78x118	78x118
KPS GP 78x140	78x140

CORRUGATED

symbol	dimensions
KFS GP 55x78	55x78
KFS GP 55x98	55x98
KFS GP 66x118	66x118
KFS GP 78x98	78x98
KFS GP 78x118	78x118
KFS GP 78x140	78x140

KOMBI

symbol	dimensions
KFK 13E GP	78x118
KFK 2E GP	78x118
KFK 46E GP	78x118
KFK 5E GP	78x118
KFK 13E GP	78x140
KFK 2EGP	78x140
KFK 46E GP	78x140
KFK 5E GP	78x140

TO SEAM

symbol	dimensions
KRS GP 78x118	78x118
KRS GP 78x140	78x140

BLINDS

The internal and external blinds are high-quality products that fit all AURA windows and require no additional adjustment. They are very easy to install. Just follow the instructions that come with each roller blind. Information about the model and size of the roof window can be found on the type plate at the top of the window sash.

DUR BLACKOUT ROLLER BLIND



Almost 100% blackout effect – perfect for bedrooms or rooms where a large range of lighting adjustment is necessary.

Dimensions: 55x78 | 66x118 | 78x98 | 78x118 | 78x140

RHR DARKENING ROLLER BLIND



Effectively diffuses light. Can be stopped in 3 specific positions.

Width: 55 | 66 | 78

MIR BLIND



An external blind that prevents overheating and significantly reduces the noise of falling rain.

Width: 55 | 66 | 78

EXTERNAL BLIND



The most effective solution to protect against solar heat.

Dimensions: 55x78 | 66x118 | 78x98 | 78x118 | 78x140

MOUNTING ACCESSORIES

THERMO-INSULATING FLANGES MADE OF EXPANDED POLYETHYLENE INF

excellent thermal insulation and window sealing,

VAPOUR-PERMEABLE FOIL FLANGE RUC

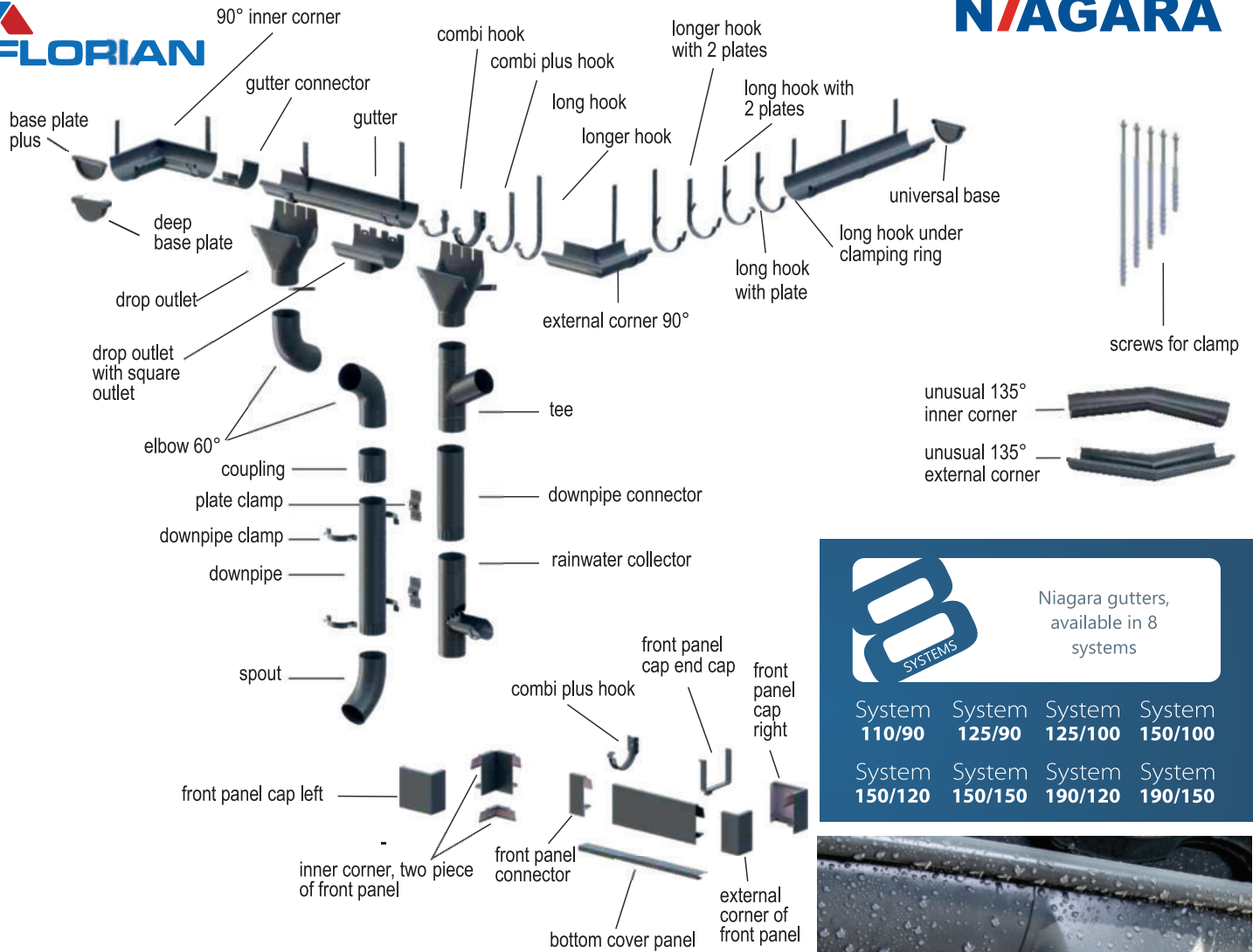
protects the roof and ensures that the roof structure is watertight,

DOOR HANDLE EXTENSION ZAR

suitable for all windows, made of metal and finished with a rubber handle,

ELECTRIC WINDOW OPENER AMC

enables the adjustment of the window opening width from 10 to 40 cm, equipped with a remote control. AMC 100 is CE marked and has a 2-year guarantee.



Niagara gutters, available in 8 systems

System 110/90	System 125/90	System 125/100	System 150/100
System 150/120	System 150/150	System 190/120	System 190/150



POLYURETHANE



ALUMINIUM – TITANIUM



TITANIUM-ZINC **GALVANISED**



POLYURETHANE steel gutters

Steel gutters with a polyurethane coating are available in a wide range of colours. This makes it easy to match the colour of the gutter system to the roof and facade of the building, according to the customer's taste and the designer's vision. Another advantage is the high resistance to discolouration and weather conditions.

ALUMINIUM-TITANIUM

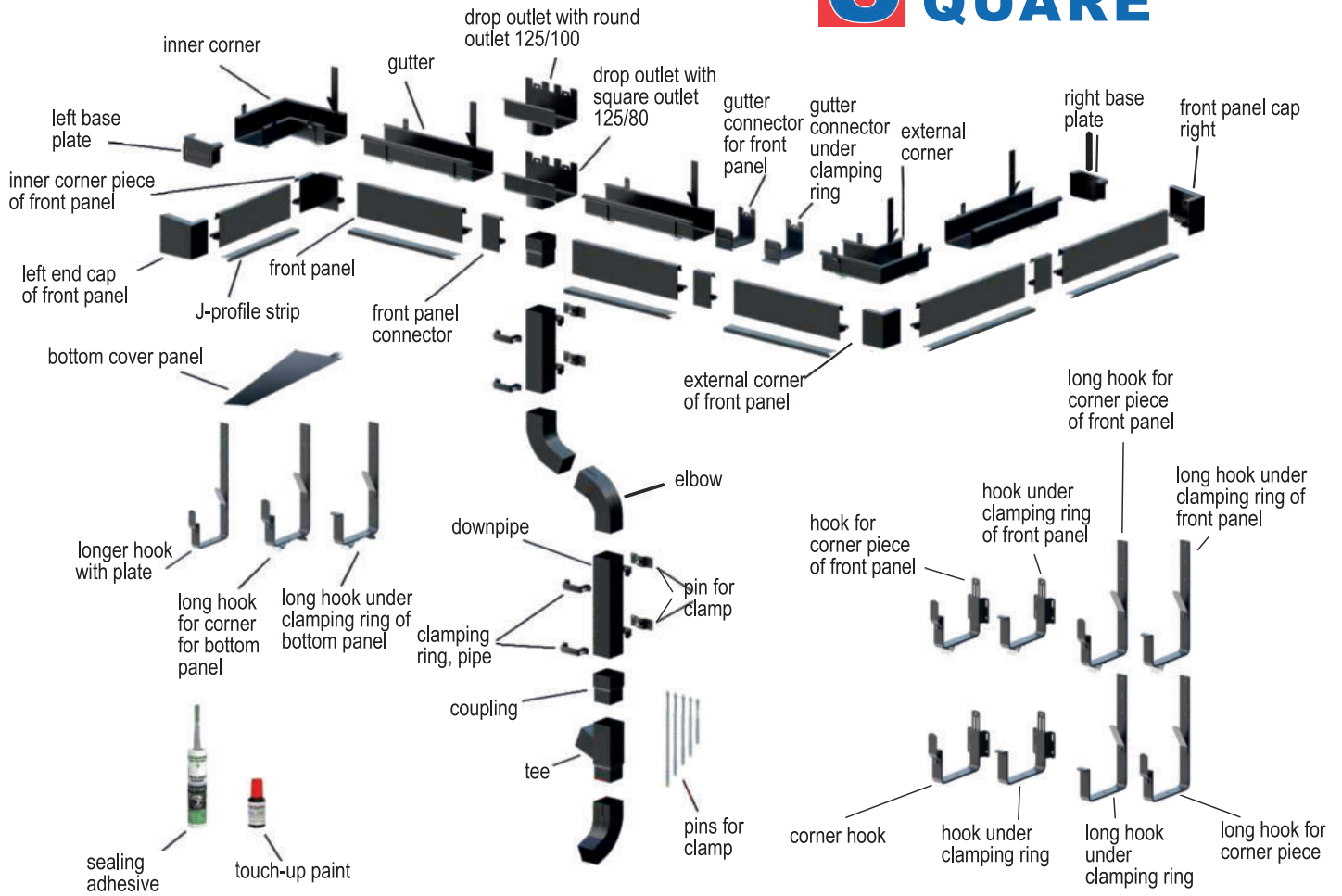
TITANIUM aluminium gutter systems are recommended for use in areas with high environmental pollution, coastal and forested areas. Due to its durability, the product was awarded a medal at the BUDMA 2015 International Trade Fair in Poznań. The use of aluminium means low empty weight and the possibility of installation at temperatures from -15 to +40°C.

GALVANISED

GALVANISED stands out for its attractive price and short order lead time while maintaining the main advantages of NIAGARA systems. The material is ideal for commercial and industrial buildings, but can also be used in residential buildings.

TITANIUM-ZINC

TITANIUM-ZINC features a classic, elegant appearance and durability of over 100 years. It is available in two versions: NATURE – naturally patinated and PATINA – chemically patinated. It is used in new buildings as well as in the renovation of historical monuments. It features high resistance to corrosion and adverse weather conditions (acid rain).

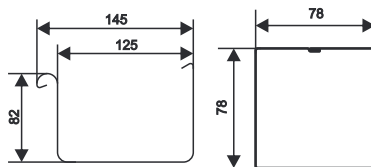
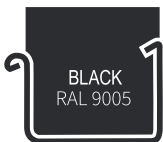


Panel elements

only available in PURLAK coatings in anthracite and black

POLYURETHANE

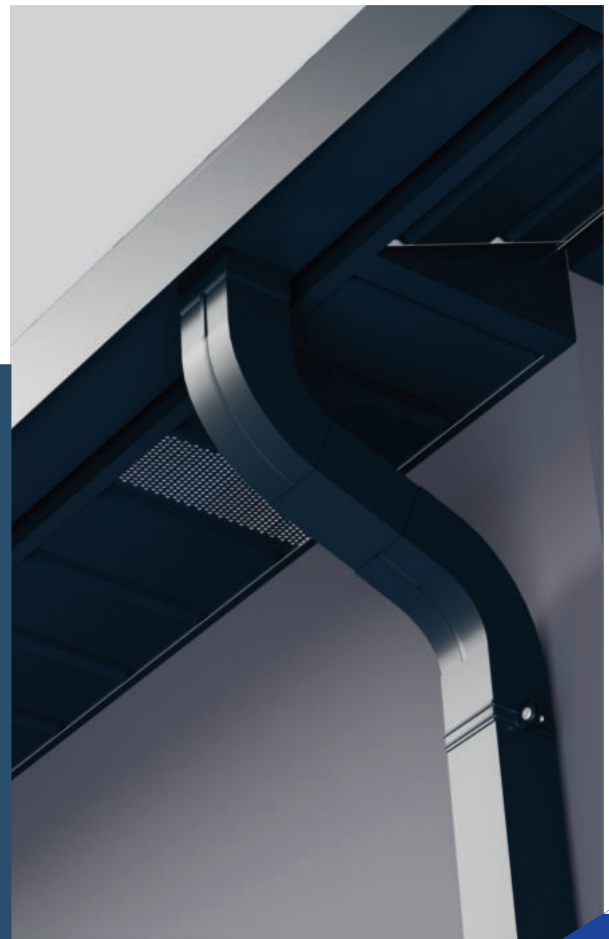
System size



The **NIAGARA SQUARE** gutter system has a unique shape that gives the building facade a modern look. The system is highly effective at draining large amounts of rainwater from any type of roof. It is functional and durable. The system components are made of the highest quality steel, galvanised and coated on both sides with polyurethane (50 µm). Polyurethane features very high resistance to corrosion as well as to colour loss.

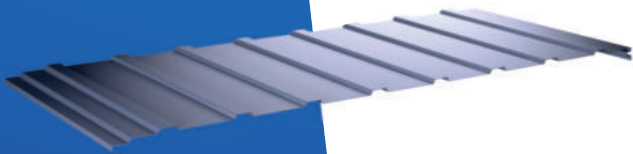
Gutters can be used in several installation systems:

- concealed system
- gutter system
- cornice system
- no gutter system

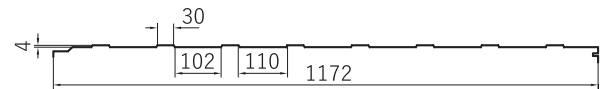




T4 FK*

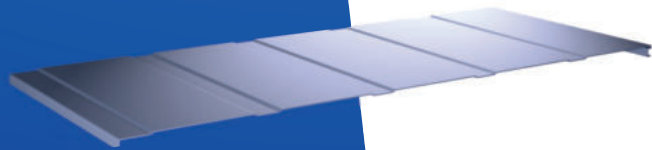


container profile

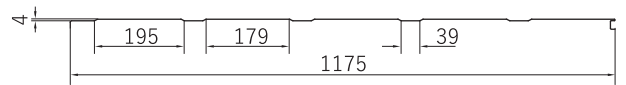


AVAILABILITY OF COATINGS		SHEET THICKNESS [mm]	RECOMMENDED LENGTHS [mm]
PS 25 µm	** PGM 35 µm	0.50	max 3000

T4 EKO FK*

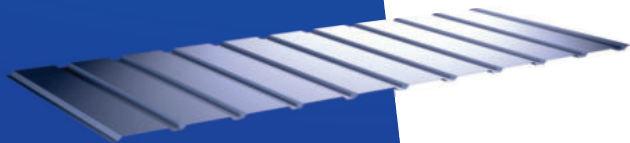


container profile

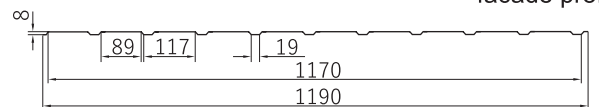


AVAILABILITY OF COATINGS		SHEET THICKNESS [mm]	RECOMMENDED LENGTHS [mm]
PS 25 µm	**PGM 35 µm	0.50	max 3000

T8 FK*



facade profile



Available in golden oak and walnut.

AVAILABILITY OF COATINGS						SHEET THICKNESS [mm]	RECOMMENDED LENGTHS [mm]	
PS 25 µm	**PMG 35 µm	ULTRAMAT 35 µm	***PURMAX® 40 µm	PURLAK® 50 µm	PURMAT® 50 µm	Aluzinc 150, 185 [g/m²]	0.50 to 0.70	max 6000

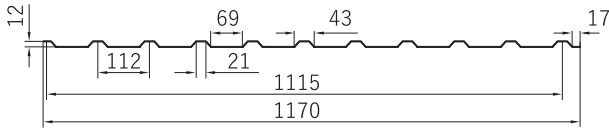
* manufactured in Kutno

**availability of colours in PMG coating – to be confirmed

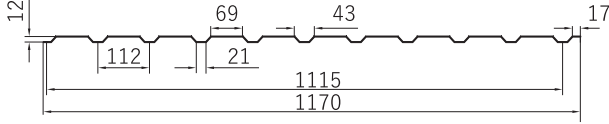
***while supplies last

TRAPEZOIDAL SHEETS

roof profile



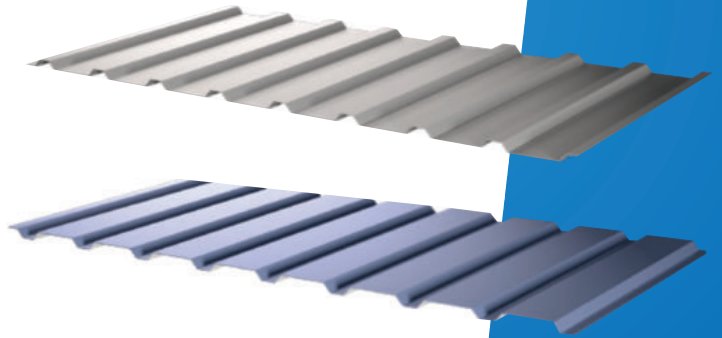
facade profile



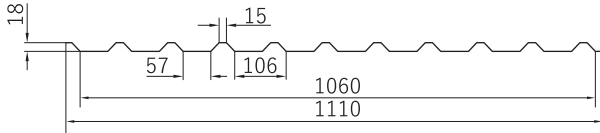
manufactured with protective film
available in golden oak and dark walnut

AVAILABILITY OF COATINGS								SHEET THICKNESS [mm]	RECOMMENDED LENGTHS [mm]
PS 25 µm	**PGM 35 µm	ULTRAMAT 35 µm	***PURMAX® 40 µm	PURLAK® 50 µm	PURMAT® 50 µm	Zinc 200, 275 [g/m²]	Aluzinc 150, 185 [g/m²]	from 0.50 to 0.70	max 8000

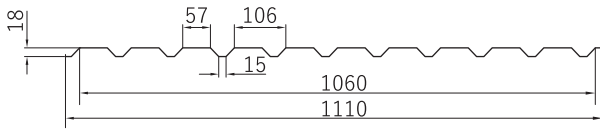
T12 FK*



roof profile



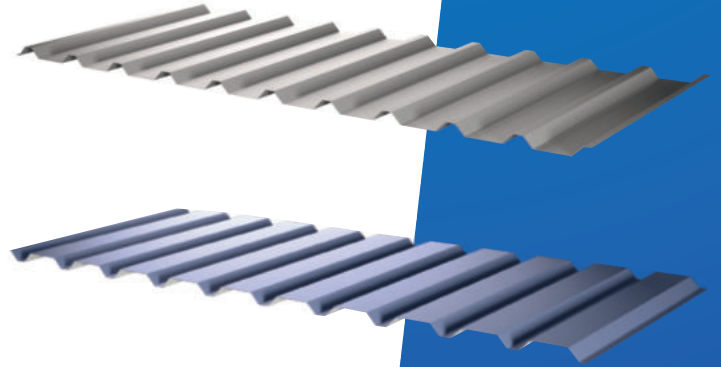
facade profile



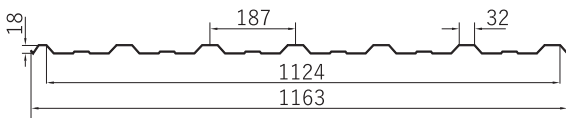
manufactured with protective film
Available in golden oak and walnut.

AVAILABILITY OF COATINGS								SHEET THICKNESS [mm]	RECOMMENDED LENGTHS [mm]
PS 25 µm	**PGM 35 µm	ULTRAMAT 35 µm	***PURMAX® 40 µm	PURLAK® 50 µm	PURMAT® 50 µm	Zinc 200, 275 [g/m²]	Aluzinc 150, 185 [g/m²]	from 0.50 to 0.70	max 9000

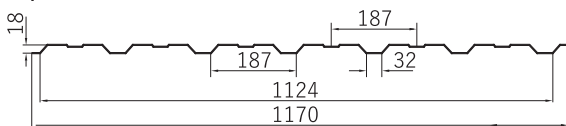
T18 FK*



roof profile



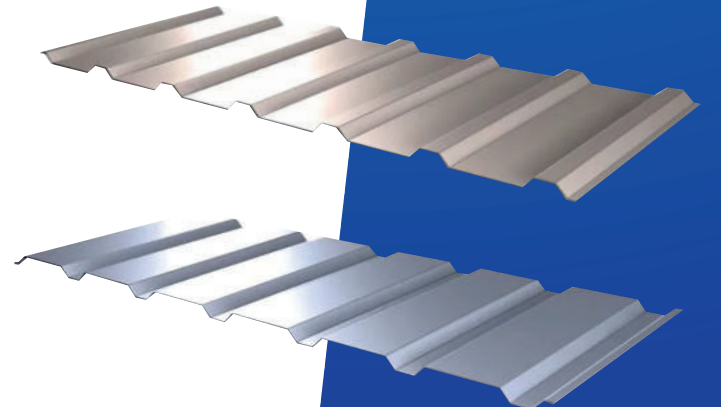
facade profile



Available in golden oak and walnut.

AVAILABILITY OF COATINGS					SHEET THICKNESS [mm]	RECOMMENDED LENGTHS [mm]
PS 25 µm	**PMG 35 µm	ULTRAMAT 35 µm	Cynk 200, 275 [g/m²]	Aluzinc 150, 185 [g/m²]	from 0.50 to 0.70	max 9000

T18



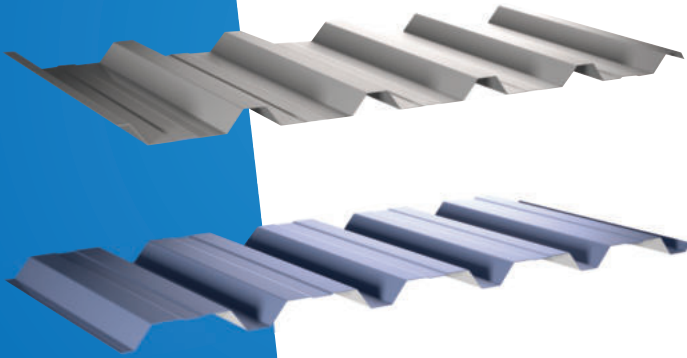
* manufactured in Kutno

**availability of colours in matt coating, thickness – to be confirmed

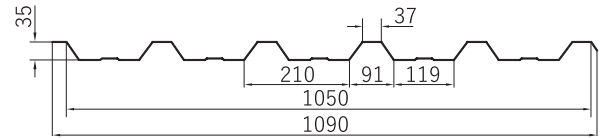
***while supplies last

TRAPEZOIDAL SHEETS

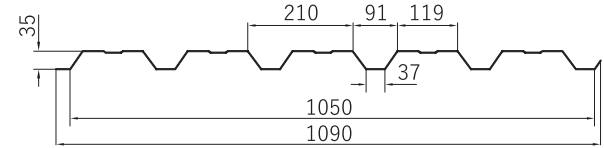
T35 FK*



roof profile



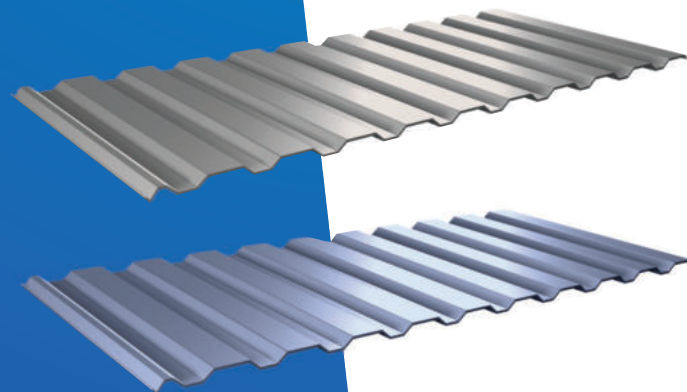
facade profile



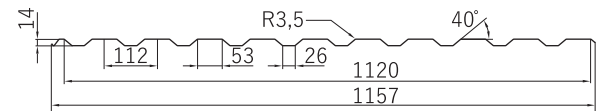
available with anti-condensation filter

AVAILABILITY OF COATINGS						SHEET THICKNESS [mm]	RECOMMENDED LENGTHS [mm]	
PS 25 µm	**PMG 35 µm	ULTRAMAT 35 µm	***PURMAX® 40 µm	PURLAK* 50 µm	PURMAT 50 µm	Aluzinc 150, 185 [g/m²]	from 0.50 to 0.70	#0.50 – max 9000 #0.70-max 12000

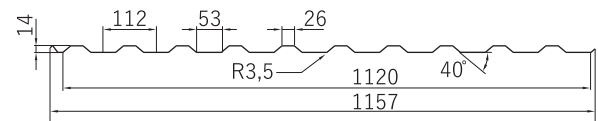
T14



roof profile

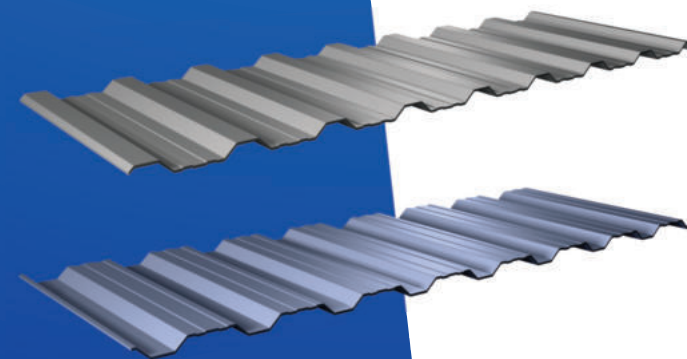


facade profile

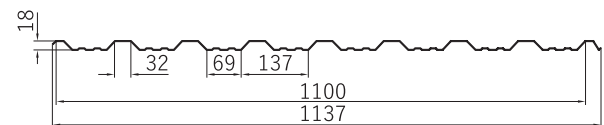


AVAILABILITY OF COATINGS					SHEET THICKNESS [mm]	RECOMMENDED LENGTHS [mm]
PS 25 µm	PGM 35 µm	ULTRAMAT 35 µm	Zinc 200, 275 [g/m²]	Aluzinc 150, 185 [g/m²]	from 0.50 to 0.70	#0.50 – max 6000 #0.70 – max 7000

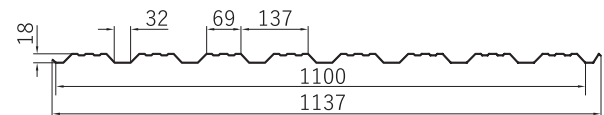
T18 DR



roof profile



facade profile



AVAILABILITY OF COATINGS					SHEET THICKNESS [mm]	RECOMMENDED LENGTHS [mm]
PS 25 µm	PMG 35 µm	ULTRAMAT 35 µm	Zinc 200, 275 [g/m²]	Aluzinc 150, 185 [g/m²]	from 0.50 to 0.70	#0.50 to 0.70 – max 9000

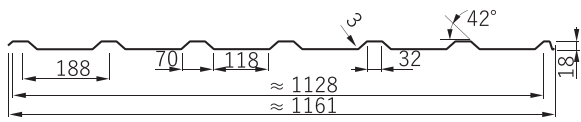
* manufactured in Kutno

**availability of colours in matt coating, thickness – to be confirmed

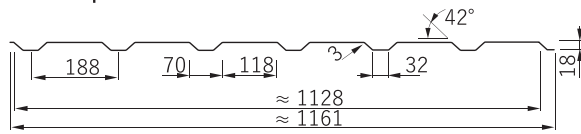
***while supplies last

TRAPEZOIDAL SHEETS

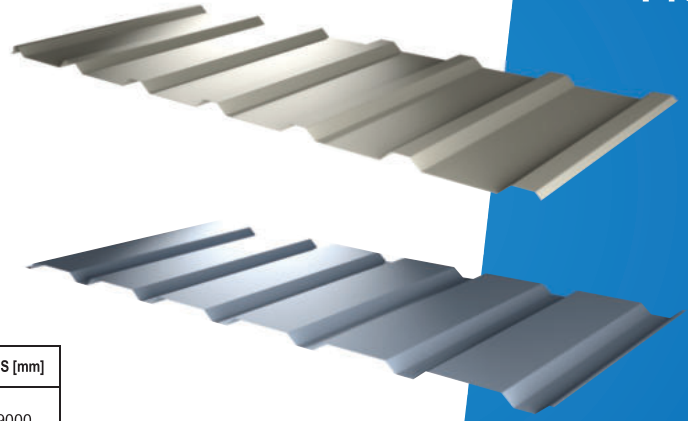
roof profile



facade profile

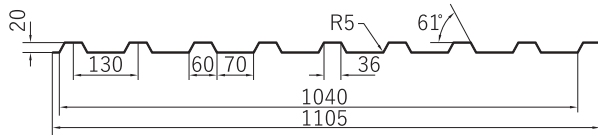


AVAILABILITY OF COATINGS				SHEET THICKNESS [mm]	RECOMMENDED LENGTHS [mm]
PS 25 µm	PMG 35 µm	ULTRAMAT® 35 µm	Aluzinc 150, 185 [g/m²]	from 0.50 to 0.70	≠0.50 to 0.70 – max 9000

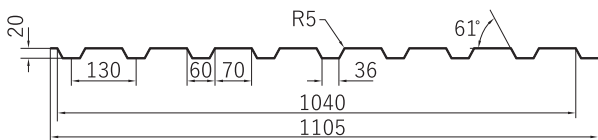


T18P

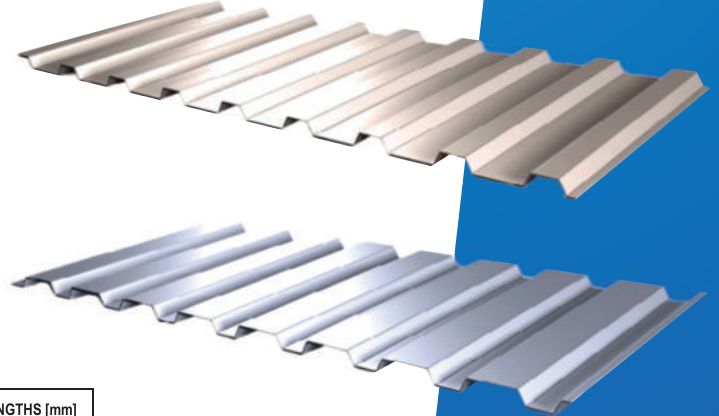
roof profile



facade profile

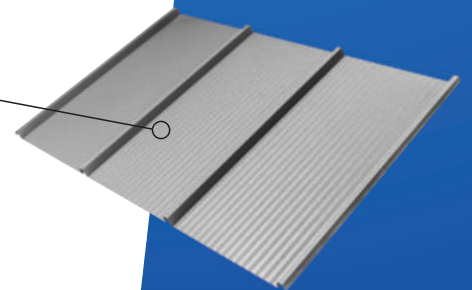
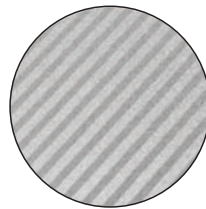
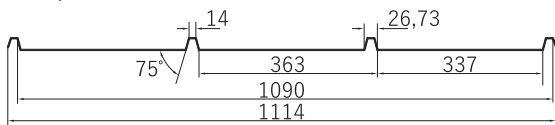


AVAILABILITY OF COATINGS				SHEET THICKNESS [mm]	RECOMMENDED LENGTHS [mm]
PS 25 µm	PMG 35 µm	ULTRAMAT® 35 µm	Aluzinc 150, 185 [g/m²]	from 0.50 to 0.70	≠0.50 to 0.70 – max 9000



T20

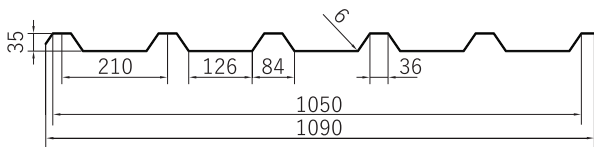
roof profile



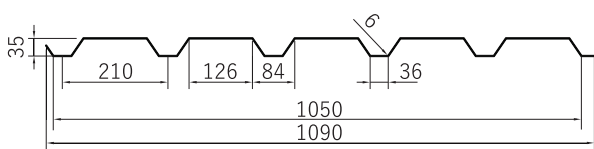
TP26

f – micro-wave

roof profile

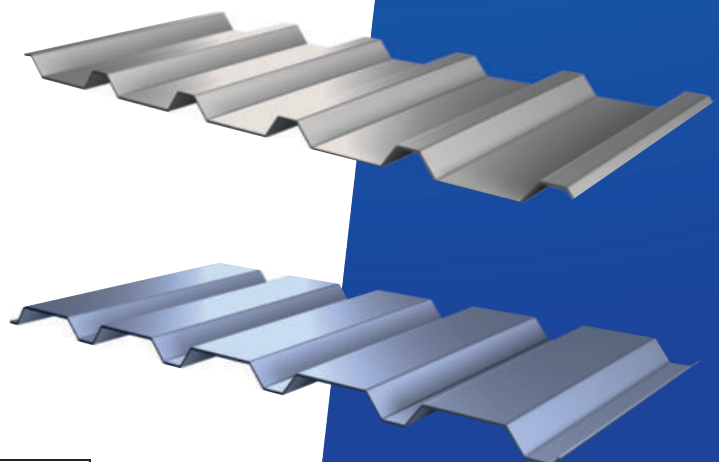


facade profile



available with anti-condensation filter

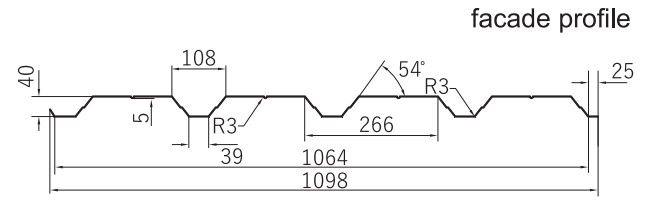
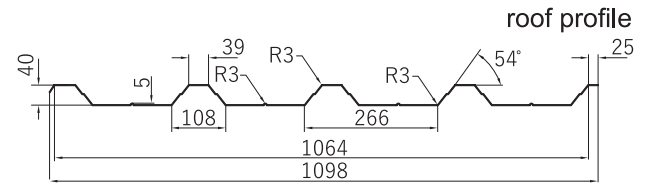
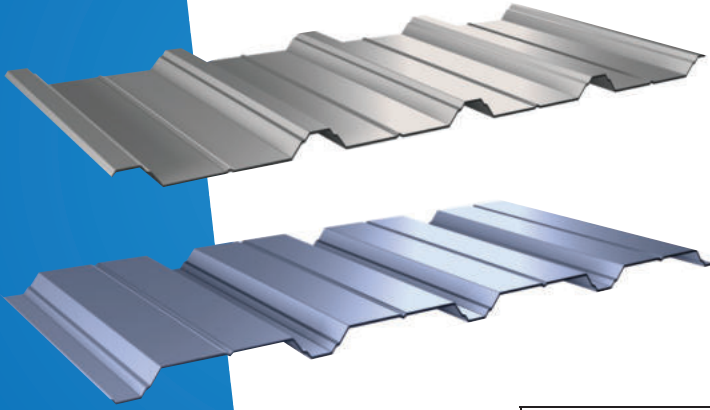
AVAILABILITY OF COATINGS				SHEET THICKNESS [mm]	RECOMMENDED LENGTHS [mm]
PS 25 µm	PMG 35 µm	ULTRAMAT® 35 µm	Aluzinc 150, 185 [g/m²]	from 0.50 to 0.70	≠ 0.50 – max 9000 ≥ 0.70 – max 12000



T35E

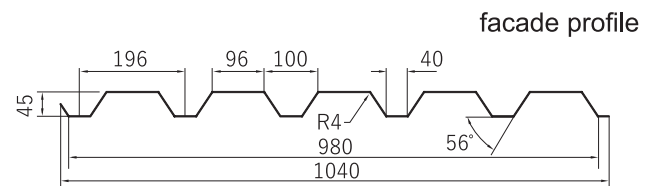
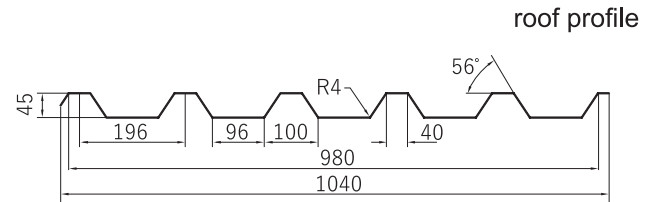
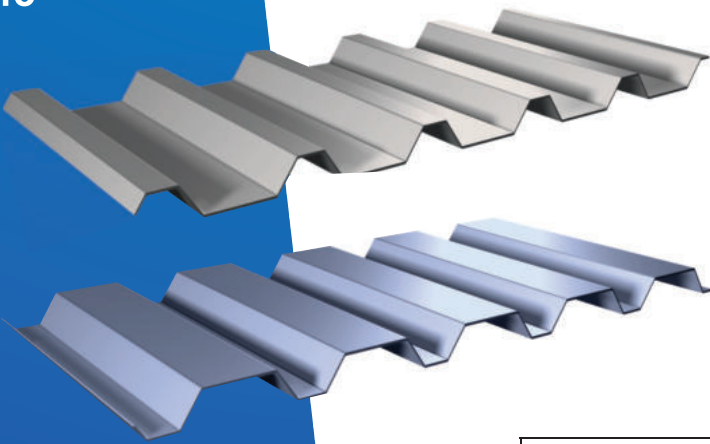
TRAPEZOIDAL SHEETS

T40



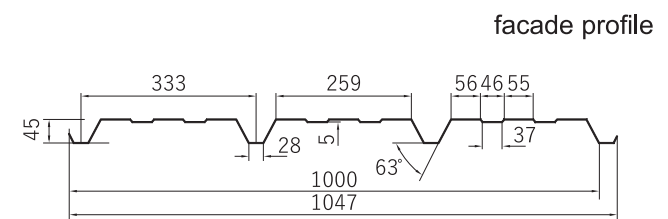
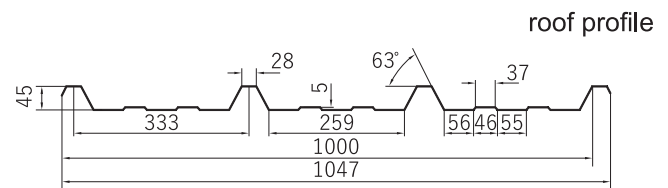
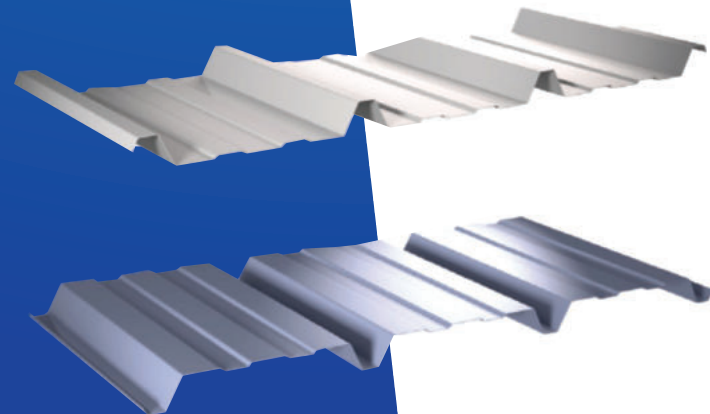
AVAILABILITY OF COATINGS					SHEET THICKNESS [mm]	RECOMMENDED LENGTHS [mm]
PS 25 µm	PGM 35 µm	ULTRAMAT 35 µm	Zinc 200, 275 [g/m ²]	Aluzinc 150, 185 [g/m ²]		

T45



AVAILABILITY OF COATINGS					SHEET THICKNESS [mm]	RECOMMENDED LENGTHS [mm]
PS 25 µm	PGM 35 µm	ULTRAMAT 35 µm	Zinc 200, 275 [g/m ²]	Aluzinc 150, 185 [g/m ²]		

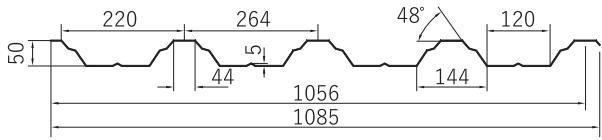
T45P



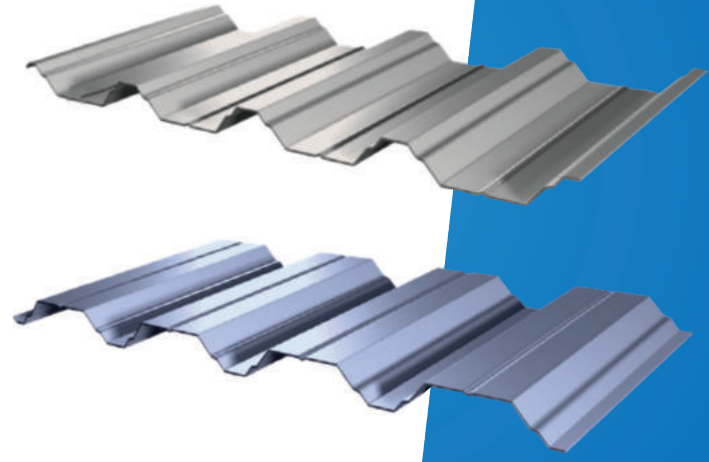
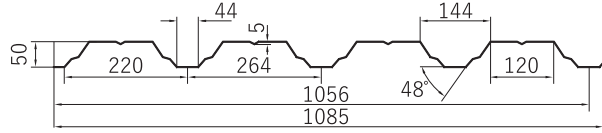
AVAILABILITY OF COATINGS					SHEET THICKNESS [mm]	RECOMMENDED LENGTHS [mm]
PS 25 µm	PGM 35 µm	ULTRAMAT 35 µm	Zinc 200, 275 [g/m ²]	Aluzinc 150, 185 [g/m ²]		

TRAPEZOIDAL SHEETS

roof profile

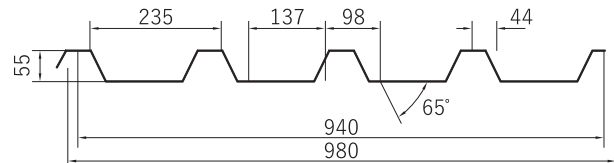


facade profile

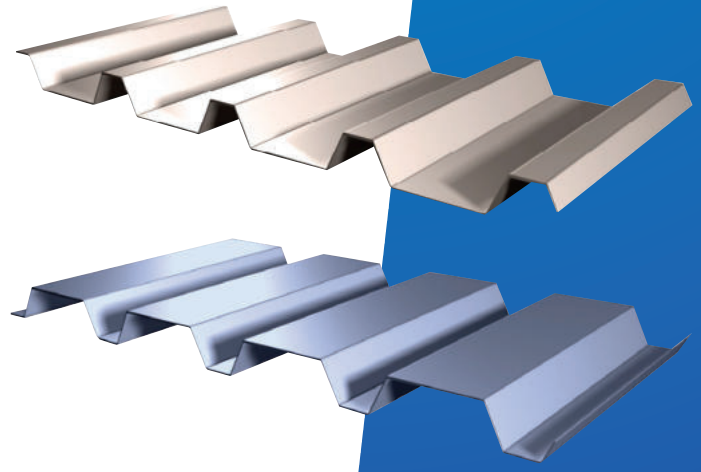
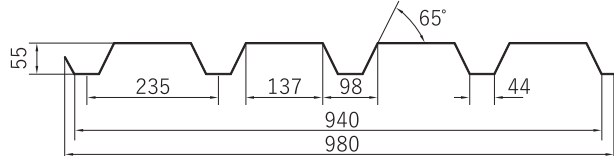


AVAILABILITY OF COATINGS					SHEET THICKNESS [mm]	RECOMMENDED LENGTHS [mm]
PS 25 µm	PMG 35 µm	ULTRAMAT 35 µm	Zinc 200, 275 [g/m ²]	Aluzinc 150, 185 [g/m ²]	from 0.50 to 0.70	≠ 0.50 – max 10000 ≥ 0.70 – max 12000

roof profile

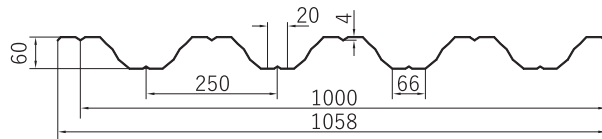


facade profile

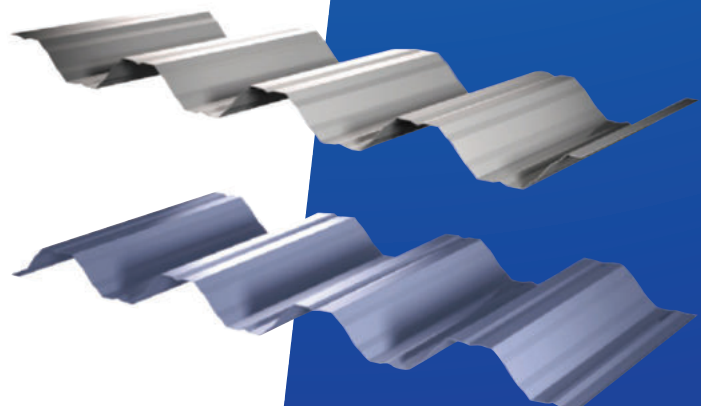
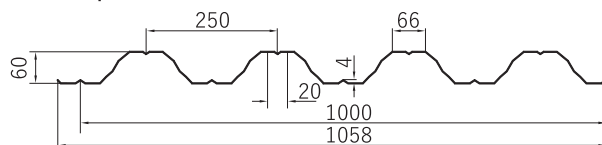


AVAILABILITY OF COATINGS					SHEET THICKNESS [mm]	RECOMMENDED LENGTHS [mm]
PS 25 µm	PMG 35 µm	ULTRAMAT 35 µm	Zinc 200, 275 [g/m ²]	Aluzinc 150, 185 [g/m ²]	from 0.50 to 0.70	≠ 0.50 – max 10000 ≥ 0.70 – max 12000

roof profile



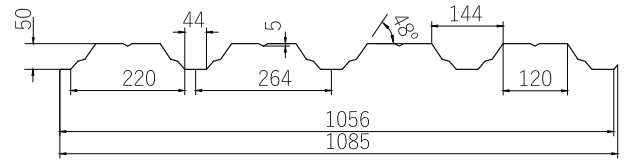
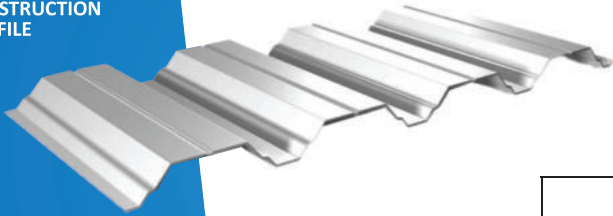
facade profile



AVAILABILITY OF COATINGS					SHEET THICKNESS [mm]	RECOMMENDED LENGTHS [mm]
PS 25 µm	PMG 35 µm	ULTRAMAT 35 µm	Zinc 200, 275 [g/m ²]	Aluzinc 150, 185 [g/m ²]	from 0.50 to 0.70	≠ 0.50 – max 10000 ≥ 0.70 – max 12000

T50P

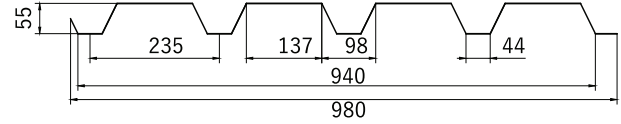
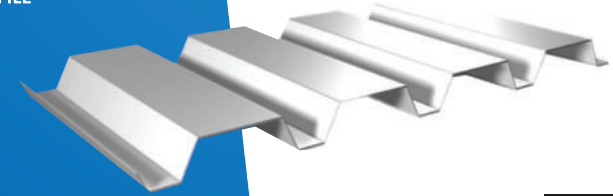
CONSTRUCTION PROFILE



AVAILABILITY OF COATINGS					SHEET THICKNESS [mm]	RECOMMENDED LENGTHS [mm]
PS 25 µm	PMG 35 µm	Polyurethane 50 µm	Zinc 200, 275 [g/m ²]	Aluzinc 150, 185 [g/m ²]	from 0.50 to 1.25	≠ 0.50 – max 10000 ≥ 0.70 – max 12000

T55P

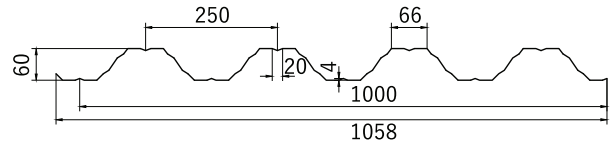
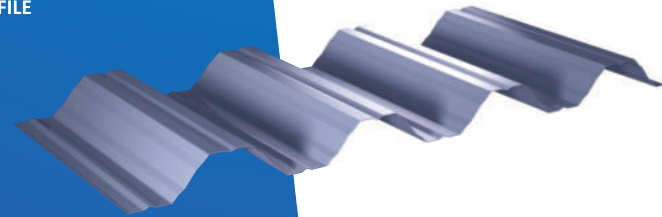
CONSTRUCTION PROFILE



AVAILABILITY OF COATINGS					SHEET THICKNESS [mm]	RECOMMENDED LENGTHS [mm]
PS 25 µm	PMG 35 µm	Polyurethane 50 µm	Zinc 200, 275 [g/m ²]	Aluzinc 150, 185 [g/m ²]	from 0.50 to 1.25	≠ 0.50 – max 10000 ≥ 0.70 – max 12000

T60 P

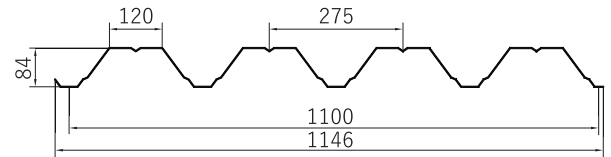
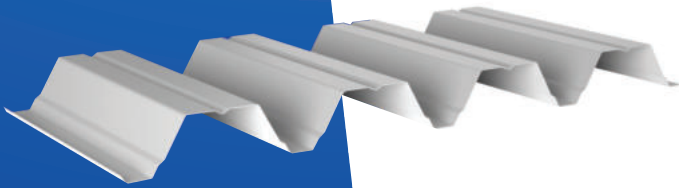
CONSTRUCTION PROFILE



AVAILABILITY OF COATINGS					SHEET THICKNESS [mm]	RECOMMENDED LENGTHS [mm]
PS 25 µm	PMG 35 µm	Polyurethane 50 µm	Zinc 200, 275 [g/m ²]	Aluzinc 150, 185 [g/m ²]	from 0.50 to 1.25	≠ 0.50 – max 10000 ≥ 0.70 – max 12000

T84

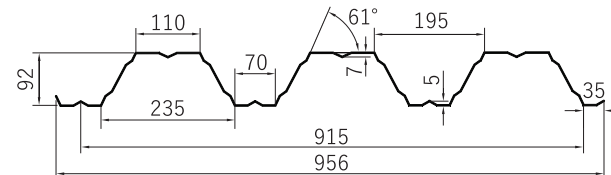
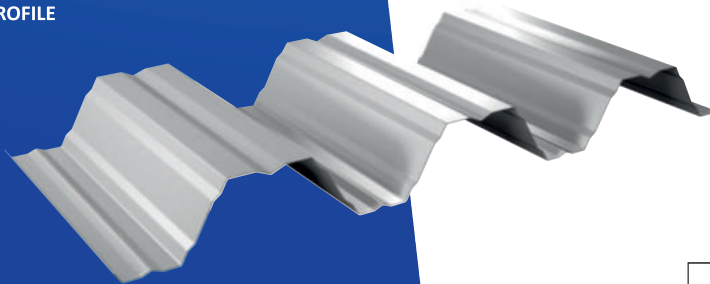
CONSTRUCTION PROFILE



AVAILABILITY OF COATINGS		SHEET THICKNESS [mm]	RECOMMENDED LENGTHS [mm]
PS 15 and 25 µm	Zinc 200, 275 [g/m ²]	from 0.70 to 1.25	≠ 0.70 – max 12000 ≥ 0.88 – max 14000

T92

CONSTRUCTION PROFILE

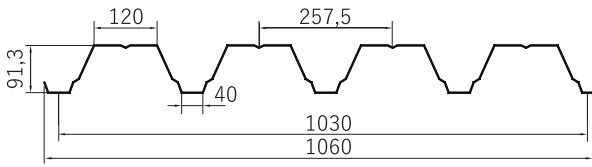


AVAILABILITY OF COATINGS				SHEET THICKNESS [mm]	RECOMMENDED LENGTHS [mm]
PS 15 i 25µm	PMG 35µm	ULTRAMAT 35µm	Cynk 200, 275 [g/m ²]	od 0,70 do 1,50 mm	≠ 0,70 – max 12000 ≥ 0,88 – max 14000

TRAPEZOIDAL SHEETS – CONSTRUCTION PROFILES

T94

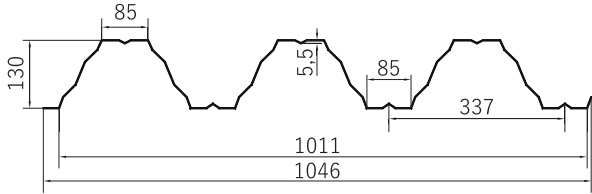
CONSTRUCTION PROFILE



AVAILABILITY OF COATINGS		SHEET THICKNESS [mm]	RECOMMENDED LENGTHS [mm]
PS 15 and 25 µm	Zinc 200, 275 [g/m ²]	from 0.70 to 1.25	≠ 0.70 – max 12000 ≥ 0.88 – max 14000

T130

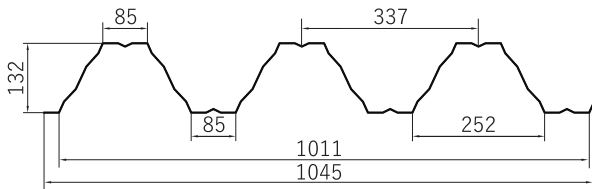
CONSTRUCTION PROFILE



AVAILABILITY OF COATINGS			SHEET THICKNESS [mm]	RECOMMENDED LENGTHS [mm]
PS 15 and 25 µm	Zinc 200, 275 [g/m ²]	Aluzinc 150, 185 [g/m ²]	from 0.70 to 1.50 mm	≠ 0.70 to 1.50 – min 2000 ≠ 0.70 – max 12000 ≠ 1.50 – max 14000

T133

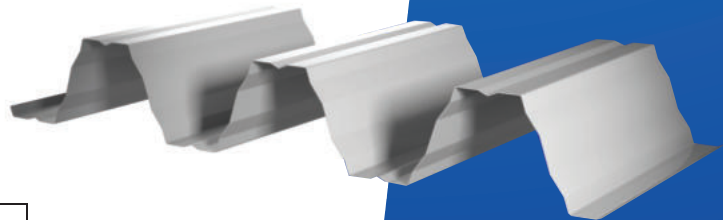
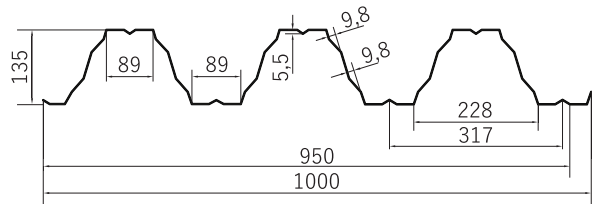
CONSTRUCTION PROFILE



AVAILABILITY OF COATINGS			SHEET THICKNESS [mm]	RECOMMENDED LENGTHS [mm]
PS 15 and 25 µm	Zinc 200, 275 [g/m ²]	Aluzinc 150, 185 [g/m ²]	from 0.70 to 1.50 mm	≠ 0.70 to 1.50 – min 2000 ≠ 0.70 – max 12000 ≠ 1.50 – max 14000

T135

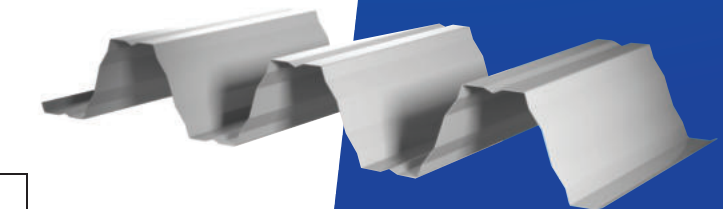
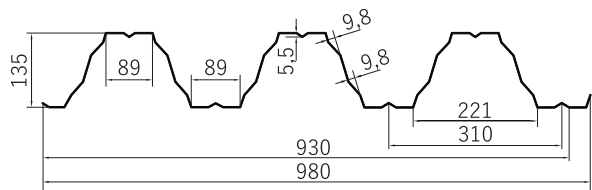
CONSTRUCTION PROFILE



AVAILABILITY OF COATINGS			SHEET THICKNESS [mm]	RECOMMENDED LENGTHS [mm]
PS 15 and 25 µm	Zinc 200, 275 [g/m ²]		from 0.70 to 1.50	≠ 0.70 to 1.50 – min 2000 ≠ 0.70 – max 12000 ≠ 1.50 – max 14000

T135 P

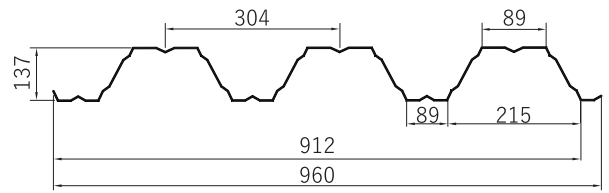
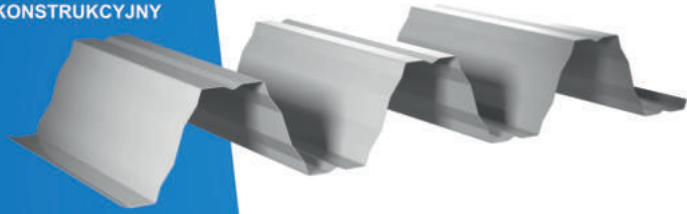
CONSTRUCTION PROFILE



AVAILABILITY OF COATINGS			SHEET THICKNESS [mm]	RECOMMENDED LENGTHS [mm]
PS 15 and 25 µm	Zinc 200, 275 [g/m ²]		from 0.70 to 1.50	≠ 0.70 to 1.50 – min 2000 ≠ 0.70 – max 12000 ≠ 1.50 – max 14000

T140

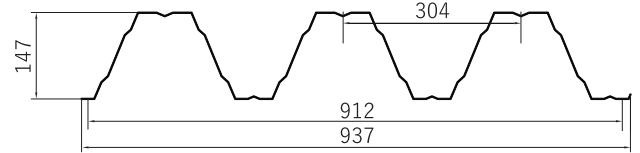
PROFIL
KONSTRUKCYJNY



AVAILABILITY OF COATINGS		SHEET THICKNESS [mm]	RECOMMENDED LENGTHS [mm]
PS 15 i 25µm	Cynk 200, 275 [g/m ²]	od 0,70 do 1,50	0,70 mm-12 mb ≥ 0,75 mm - info in the sales department

T147

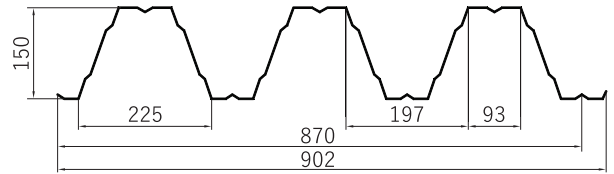
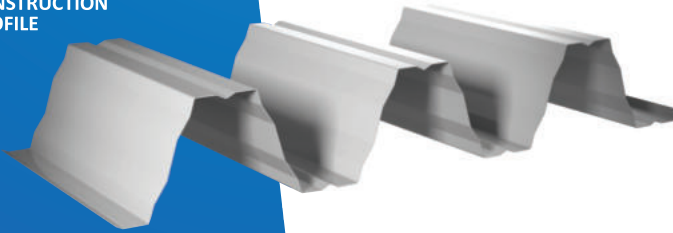
CONSTRUCTION
PROFILE



AVAILABILITY OF COATINGS		SHEET THICKNESS [mm]	RECOMMENDED LENGTHS [mm]
PS 5 and 25 µm	Zinc 200, 275 [g/m ²]	from 0.70 to 1.50	≠0.70 to 1.50 – min 2000 ≠ 0.70 – max 12000 ≠ 1.50 – max 14000

T150

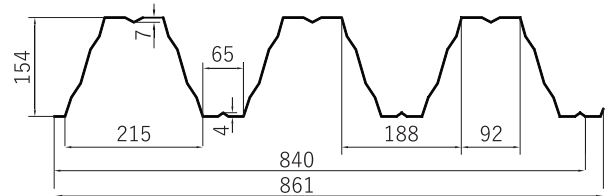
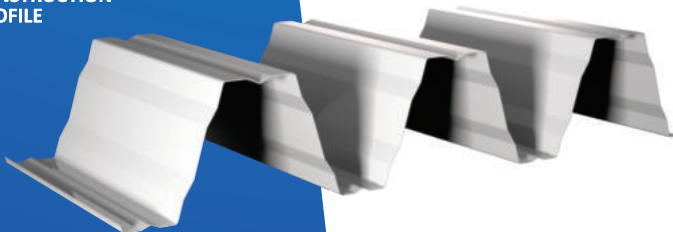
CONSTRUCTION
PROFILE



AVAILABILITY OF COATINGS		SHEET THICKNESS [mm]	RECOMMENDED LENGTHS [mm]
PS 15 and 25 µm	Zinc 200, 275 [g/m ²]	from 0.70 to 1.50	≠0.70 to 1.50 – min 2000 ≠ 0.70 – max 12000 ≠ 1.50 – max 14000

T155

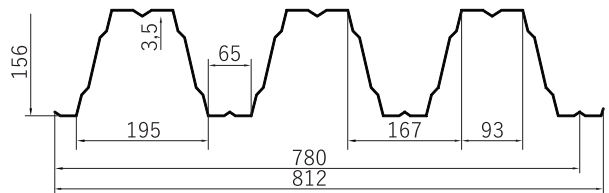
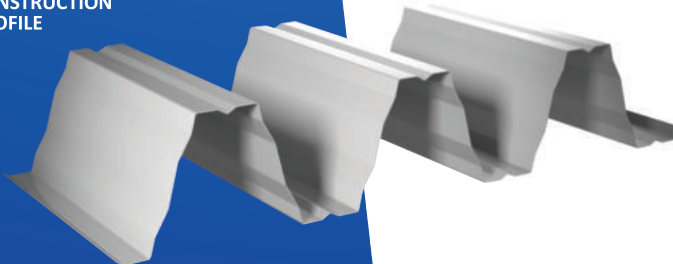
CONSTRUCTION
PROFILE



AVAILABILITY OF COATINGS		SHEET THICKNESS [mm]	RECOMMENDED LENGTHS [mm]
PS 15 and 25 µm	Zinc 200, 275 [g/m ²]	from 0.70 to 1.50	≠0.70 to 1.50 – min 2000 ≠ 0.70 – max 12000 ≠ 1.50 – max 14000

T160

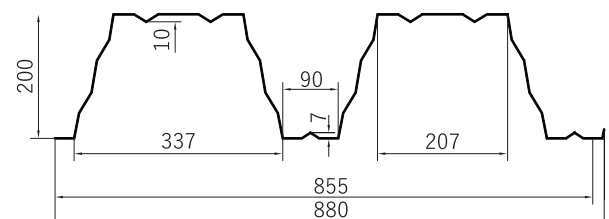
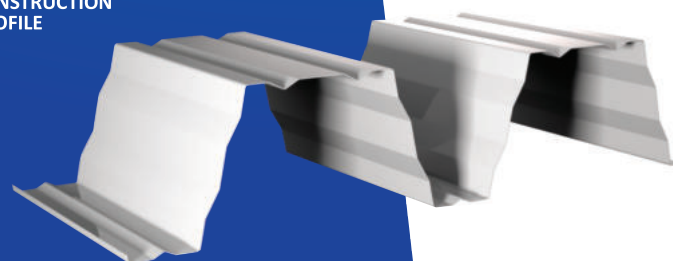
CONSTRUCTION
PROFILE



AVAILABILITY OF COATINGS		SHEET THICKNESS [mm]	RECOMMENDED LENGTHS [mm]
PS 15 and 25 µm	Zinc 200, 275 [g/m ²]	from 0.70 to 1.50	≠0.70 to 1.50 – min 2000 ≠ 0.70 – max 12000 ≠ 1.50 – max 14000

T200

CONSTRUCTION
PROFILE



AVAILABILITY OF COATINGS		SHEET THICKNESS [mm]	RECOMMENDED LENGTHS [mm]
PS 15 and 25 µm	Zinc 200, 275 [g/m ²]	from 0.70 to 1.50	≠0.70 to 1.50 – min 2000 ≠ 0.70 – max 12000 ≠ 1.50 – max 14000



Florian Centrum manufactures construction profiles made of high-quality, metallised steel (Z, ZM). Their excellent technical parameters, i.e. high durability and low weight, as well as quick and easy installation, make them widely applicable in load-bearing structures.

Application: as components for the construction of steel structures for modular halls, for the construction of partition and screen walls, as wall transoms and roof purlins, as structures for photovoltaic panels, wherever a simple, quick and stable construction is required.

Hole boring:

We usually make construction profiles with mounting holes. This makes it easier to install them with connectors. Due to the possibility of dismantling and reinstalling the structure at a later date, it is recommended to use screws.

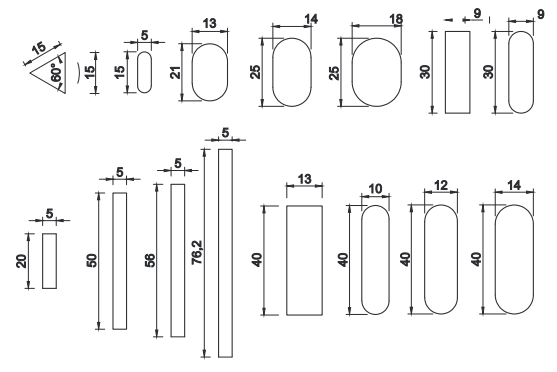
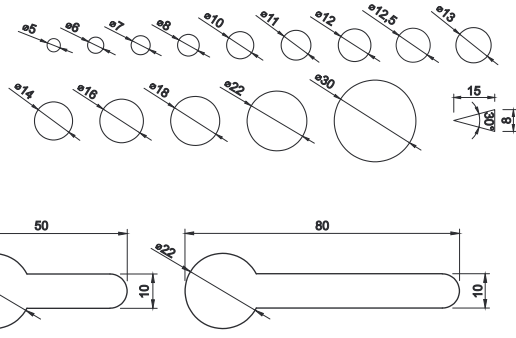
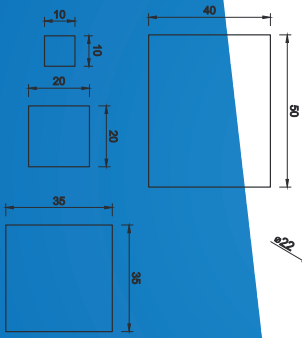
The wide range of holes used facilitates installation work and enables easier use of the structure. Examples of available perforation types on the website.

Material:

The profiles are made of high-quality steel with a metallic coating: galvanised or with a Magnelis coating, in thicknesses from 1.50 mm to 3.00 mm.

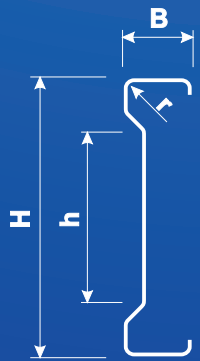
Max L = 12000 mm

EXAMPLE HOLE MAKING



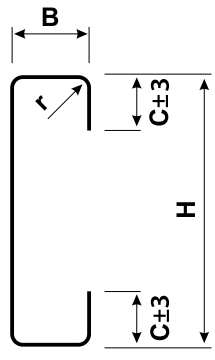
Σ PROFILE

	sheet thickness mm	weight kg/m	H mm	h mm	B mm
Σ 140	1,50	3,84	140	30	
	2,00	5,12	140	30	
	2,50	6,24	140	30	
	3,00	7,49	140	30	
	*3,50	8,80	140	30	
Σ 170	1,50	4,20	170	60	
	2,00	5,60	170	60	
	2,50	6,84	170	60	
	3,00	8,21	170	60	
	*3,50	9,60	170	60	
Σ 200	1,50	4,56	200	90	
	2,00	6,08	200	90	
	2,50	7,44	200	90	
	3,00	8,93	200	90	
	*3,50	10,42	200	90	
Σ 230	1,50	4,96	230	120	
	2,00	6,56	230	120	
	2,50	8,04	230	120	
	3,00	9,65	230	120	
	*3,50	11,26	230	120	
Σ 260	1,50	5,28	260	150	
	2,00	7,04	260	150	
	2,50	8,64	260	150	
	3,00	10,37	260	150	
	*3,50	12,10	260	150	
Σ 300	1,50	5,76	300	190	
	2,00	7,68	300	190	
	2,50	9,44	300	190	
	3,00	11,33	300	190	
	*3,50	13,22	300	190	
Σ 350	1,50	6,36	350	240	
	2,00	8,48	350	240	
	2,50	10,44	350	240	
	3,00	12,53	350	240	
	*3,50	14,62	350	240	



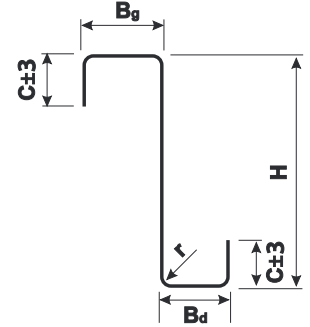
C PROFILE

	sheet thickness mm	weight* kg/m	H mm	B mm
C 100	1,50	2,64	100	48
	2,00	3,52	100	48
	2,50	4,36	100	48
	3,00	5,23	100	48
	*3,50	6,10	100	48
C 150	1,50	2,88	150	60
	2,00	3,84	150	60
	2,50	4,76	150	60
	3,00	5,71	150	60
	*3,50	6,66	150	60
C 200	1,50	3,24	200	80
	2,00	4,32	200	80
	2,50	5,36	200	80
	3,00	6,43	200	80
	*3,50	7,50	200	80
C 250	1,50	3,60	250	100
	2,00	4,80	250	100
	2,50	5,96	250	100
	3,00	7,15	250	100
	*3,50	8,34	250	100
C 300	1,50	3,84	300	120
	2,00	5,12	300	120
	2,50	6,36	300	120
	3,00	7,63	300	120
	*3,50	8,90	300	120
C 350	1,50	4,20	350	150
	2,00	5,60	350	150
	2,50	6,96	350	150
	3,00	8,35	350	150
	*3,50	9,74	350	150
C 400	1,50	4,50	400	180
	2,00	6,00	400	180
	2,50	7,40	400	180
	3,00	8,88	400	180
	*3,50	10,36	400	180
C 450	1,50	4,80	450	210
	2,00	6,40	450	210
	2,50	7,96	450	210
	3,00	9,55	450	210
	*3,50	11,14	450	210
C 500	1,50	5,02	500	240
	2,00	6,69	500	240
	2,50	8,28	500	240
	3,00	9,94	500	240
	*3,50	11,60	500	240
C 550	1,50	5,33	550	270
	2,00	7,10	550	270
	2,50	8,72	550	270
	3,00	10,46	550	270
	*3,50	12,20	550	270
C 600	1,50	6,26	600	300
	2,00	8,35	600	300
	2,50	10,40	600	300
	3,00	12,48	600	300
	*3,50	14,56	600	300
C 650	1,50	6,79	650	330
	2,00	9,06	650	330
	2,50	11,32	650	330
	3,00	13,58	650	330
	*3,50	15,84	650	330
C 700	1,50	6,48	700	360
	2,00	8,64	700	360
	2,50	10,80	700	360
	3,00	12,96	700	360
	*3,50	15,12	700	360
C 750	1,50	7,08	750	390
	2,00	9,44	750	390
	2,50	11,80	750	390
	3,00	14,16	750	390
	*3,50	16,52	750	390



Z PROFILE

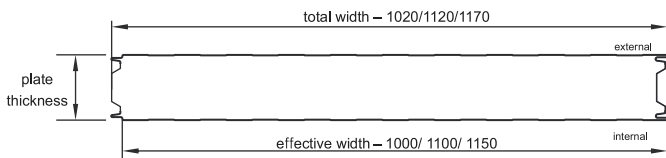
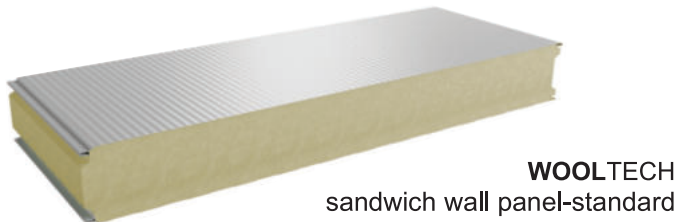
	sheet thickness mm	weight* kg/m	H mm	Bd mm	Bg mm	C mm
Z 100	1,50	2,64	100	48	53	19
	2,00	3,52	100	48	53	19
	2,50	4,40	100	48	55	19
	3,00	5,28	100	48	55	19
	*3,50	6,16	100	48	55	19
Z 150	1,50	3,00	150	60	68	20
	2,00	4,00	150	60	68	20
	2,50	5,00	150	60	68	20
	3,00	6,00	150	60	68	20
	*3,50	7,00	150	60	68	20
Z 200	1,50	3,24	200	80	83	19
	2,00	4,32	200	80	83	19
	2,50	5,40	200	80	85	19
	3,00	6,48	200	80	85	19
	*3,50	7,56	200	80	85	19
Z 250	1,50	3,60	250	100	108	20
	2,00	4,80	250	100	108	20
	2,50	6,00	250	100	108	20
	3,00	7,20	250	100	108	20
	*3,50	8,40	250	100	108	20
Z 300	1,50	3,96	300	120	133	20
	2,00	5,28	300	120	133	20
	2,50	6,60	300	120	133	20
	3,00	7,92	300	120	133	20
	*3,50	9,24	300	120	133	20
Z 350	1,50	3,84	350	140	158	18
	2,00	5,12	350	140	158	18
	2,50	6,40	350	140	158	18
	3,00	7,68	350	140	158	18
	*3,50	8,96	350	140	158	18
Z 400	1,50	4,20	400	160	183	20
	2,00	5,60	400	160	183	20
	2,50	7,00	400	160	183	20
	3,00	8,40	400	160	183	20
	*3,50	9,80	400	160	183	20
Z 450	1,50	4,80	450	180	208	20
	2,00	6,40	450	180	208	20
	2,50	8,00	450	180	208	20
	3,00	9,60	450	180	208	20
	*3,50	11,20	450	180	208	20
Z 500	1,50	4,97	500	200	233	20
	2,00	6,62	500	200	233	20
	2,50	8,24	500	200	233	20
	3,00	9,89	500	200	233	20
	*3,50	11,54	500	200	233	20
Z 550	1,50	5,69	550	220	258	21
	2,00	7,58	550	220	258	21
	2,50	9,32	550	220	258	21
	3,00	11,18	550	220	258	21
	*3,50	13,04	550	220	258	21
Z 600	1,50	6,24	600	240	283	24
	2,00	8,32	600	240	283	24
	2,50	10,40	600	240	283	24
	3,00	12,48	600	240	283	24
	*3,50	14,56	600	240	283	24
Z 650	1,50	6,79	650	260	308	23
	2,00	9,06	650	260	308	23
	2,50	11,32	650	260	308	23
	3,00	13,58	650	260	308	23
	*3,50	15,84	650	260	308	23
Z 700	1,50	6,48	700	280	333	24
	2,00	8,64	700	280	333	24
	2,50	10,80	700	280	333	24
	3,00	12,96	700	280	333	24
	*3,50	15,12	700	280	333	24
Z 750	1,50	7,08	750	300	358	23
	2,00	9,44	750	300	358	23
	2,50	11,80	750	300	358	23
	3,00	14,16	750	300	358	23
	*3,50	16,52	750	300	358	23



* PLEASE NOTE: Profiles made of 3.5 mm thick sheet metal can only be made to special order. Detailed order arrangements require l consultation with the sales or technical department.

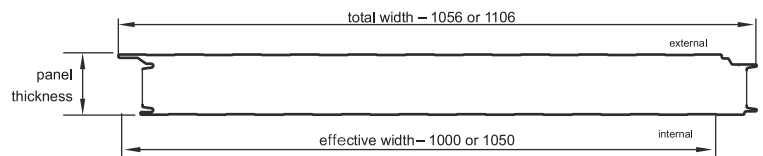
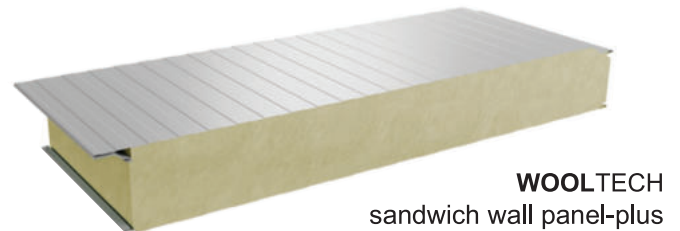


PWS2-MW-ST



panel thickness [mm]	60, 80, 100, 120, 140, 150, 160, 180, 200, 220, 240
effective width [mm]	1000, 1100, 1150
total width [mm]	1020, 1120, 1170
sheet metal thickness outside/inside [mm]	0.5–0.7
core [kg/m ²]	ST-wool with a density of 115, ECO-wool with a density of 80
min. panel length [m]	2
max. panel length [m]	16 (depending on colour)*
type of external profiling	T – trapezoid / M – micro-trapezoid / F – wave / N – nano-wave / P – flat**
type of internal profiling	T – trapezoid / P – flat**
anti-corrosion coatings	PS, polyurethane, HPS200

PWS2-MW-PL



panel thickness [mm]	100, 120, 140, 150, 160, 180, 200, 220, 240
effective width [mm]	1000, 1050
total width [mm]	1056, 1106
sheet metal thickness outside/inside [mm]	0.5–0.7
core [kg/m ²]	wool with density of 115
min. panel length [m]	2
max. panel length [m]	16 (depending on colour)*
type of external profiling	T – trapezoid / M – micro-trapezoid / F – wave / N – nano-wave / P – flat**
type of internal profiling	T – trapezoid / P – flat**
anti-corrosion coatings	PS, polyurethane, HPS200

PWS2-MW-ST sheets are also available in the following versions:

- PWS2-MW-ST SAFETY panels in 200 and 240 mm thicknesses
- PWS2-MW-ST THERMO panels in 180 and 200 mm thicknesses

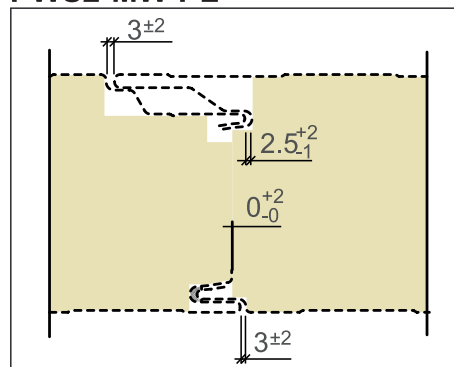
JOINING OF PANELS

PWS2-MW-ST

plate thickness	60, 80, 100	120, 140, 150, 160, 180	200, 220, 240
lock type			

JOINING OF PANELS

PWS2-MW-PL



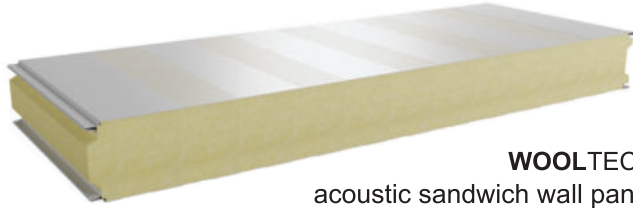
LOAD DISTRIBUTOR

The load distributor is an essential component used when installing PWS2-MW-PL sandwich panels with concealed fastening. If it is not included, the load-bearing capacity of the panels is reduced by ~30%. It has three holes to facilitate the arrangement of fasteners in relation to the structure. A minimum of two connectors per distributor is assumed.

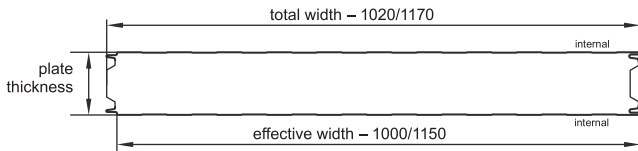
* colours of the cladding	dark: RR 011, RR 028, RR 033, RR750, RAL 9005, RAL 3005, RAL 3011, RAL 6005, RAL 6029, RAL 5010, RAL 7024, RAL 7016, RAL 8017, RAL 8023, RAL 9007, dark walnut, golden oak	bright: RAL 1002, RAL 1021, RAL 7000, RAL 9006	very bright: RAL 1015, RAL 7035, RAL 9010, RAL 9002
max. length [m]	9/13.5 metres (wall, roof)	12/16 metres (wall, roof)	16 metres (wall, roof)

SANDWICH PANELS WITH MINERAL WOOL CORE

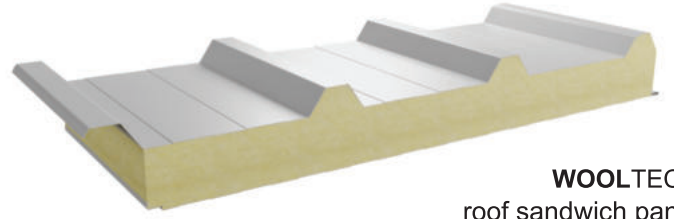
PWS2 MWA ST



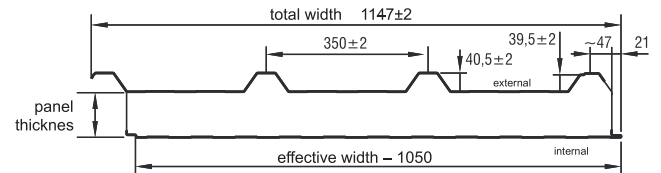
WOOLTECH
acoustic sandwich wall panel



PWD2-MW



WOOLTECH
roof sandwich panel

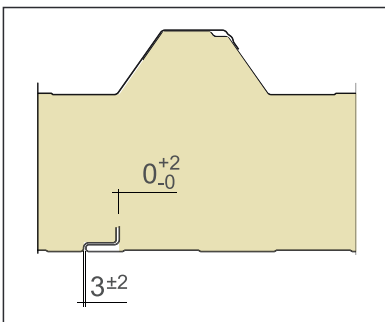


panel thickness [mm]	100, 120, 140, 150, 160, 180, 200, 220, 240
effective width [mm]	1000, 1150
total width [mm]	1020, 1170
sheet metal thickness outside/inside [mm]	0.5–0.7
core [kg/m ²]	wool with density of 115
min. panel length [m]	2
max. panel length [m]	16 (depending on colour)*
type of external profiling	T – trapezoid / M – micro-trapezoid / F – wave / N – nano-wave / P – flat**
type of internal profiling	P – flat**
anti-corrosion coatings	PS, polyurethane, HPS200

panel thickness [mm]	100, 120, 140, 150, 160, 180, 200, 220, 240, 250, 260
effective width [mm]	1050
total width [mm]	1147±2
sheet metal thickness outside/inside [mm]	0.5–0.7
core [kg/m ²]	wool with density of 115
min. panel length [m]	2
max. panel length [m]	16 (depending on colour)*
type of external profiling	T40 trapezoid
type of internal profiling	T – trapezoid / P – flat**
anti-corrosion coatings	PS, polyurethane, HPS200

CLADDING PROFILING OPTIONS

JOINING OF PANELS PWD2-MW



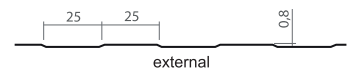
STORM WASHER



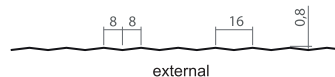
T – trapezoid



MT – micro-trapezoid



F – wave



N – nano-wave



P – flat**

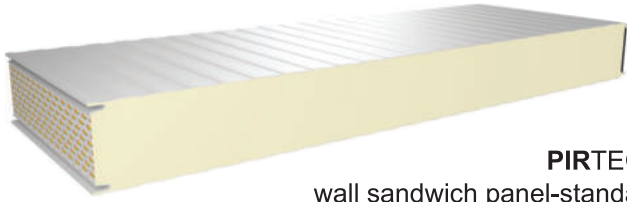


**Smooth profiling is only done for cladding with a thickness ≥ 0.6 mm.

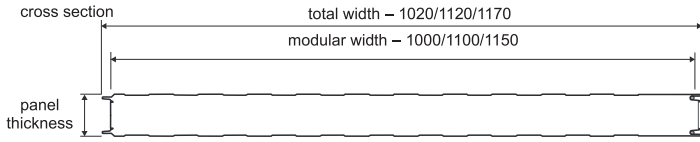
We also offer coatings for interior cladding, which are suitable for chemically aggressive environments.

See page 55

PWS-PIR-ST



PIRTECH
wall sandwich panel-standard



core	polyurethane PIR
panel thickness [mm]	40, 50**, 60, 80, 100, 110, 120
effective width [mm]	1000, 1100, 1150
total width [mm]	1020, 1120, 1170
min. panel length [m]	2.0
max. panel length [m]	18*
sheet metal thickness outside/inside [mm]	0.5/0.4 on request: 0.4–0.7 / 0.4–0.63
Lambda coefficient [W/mK]	0.022
type of external profiling	T – trapezoid, M – micro-trapezoid, F – wave, K – cassette, P – flat
type of internal profiling	T – trapezoid
coatings:	PS, polyurethane, HPS200
accessories:	fastening systems, seals, finishing

* – applies only to colours from group I – very bright

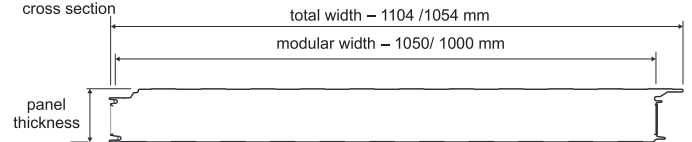
** – ask about availability at Florian Centrum company

*** – the approximate panel weights are based on a sheet thickness of 0.50 mm on the outside and 0.40 mm on the inside, and a standard module

PWS-PIR-PL



PIRTECH
sandwich wall panel-plus



core	polyurethane PIR
panel thickness [mm]	60, 80, 100, 120
effective width [mm]	1000, 1050
total width [mm]	1054, 1104
min. panel length [m]	2.0
max. panel length [m]	18*
sheet metal thickness outside/inside [mm]	0.5/0.4 on request: 0.4–0.7 / 0.4–0.63
Lambda coefficient [W/mK]	0.022
type of external profiling	T – trapezoid, M – micro-trapezoid, F – wave, K – cassette
type of internal profiling	T – trapezoid
coatings:	PS, polyurethane, HPS200
accessories:	fastening systems, seals, finishing

LOAD DISTRIBUTOR

The load distributor is an essential component used when installing PWS-PIR-PL sandwich panels with concealed fastening. It has three holes to facilitate the arrangement of fasteners in relation to the structure. Two fasteners were adopted for one such element.



PWS-PIR-ST

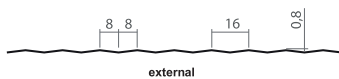


PWS-PIR-PL



CLADDING PROFILING OPTIONS

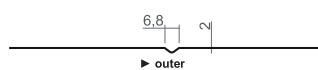
F – wave



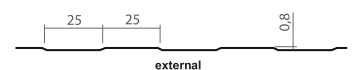
T – trapezoid



Cassettes



MT – micro-trapezoid

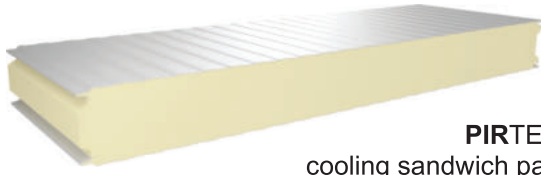


**Micro-embossing only available for external cladding

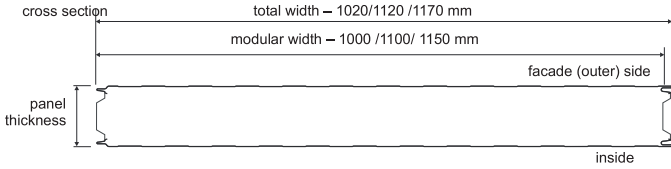
We also offer coatings for interior cladding, which are suitable for chemically aggressive environments.

See page 55

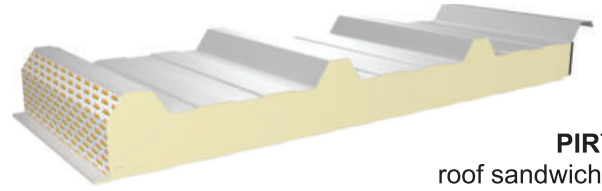
PWS-PIR-CH



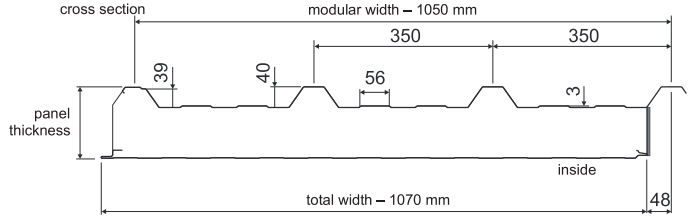
PIRTECH
cooling sandwich panel



PWD-PIR



PIRTECH
roof sandwich panel



core	polyurethane PIR
panel thickness [mm]	120, 140, 160, 180, 200, 220
effective width [mm]	1000, 1100, 1150
total width [mm]	1020, 1120, 1170
min. panel length [m]	2,0
max. panel length [m]	18*
sheet metal thickness outside/inside [mm]	0.5/0.4 on request: 0.5–0.7 / 0.5–0.63
Lambda coefficient [W/mK]	0.022
type of external profiling	T – trapezoid, M – micro-trapezoid, F – wave, K – cassette
type of internal profiling	T – trapezoid
coatings:	PS, polyurethane, HPS200
accessories:	fastening systems, seals, finishing

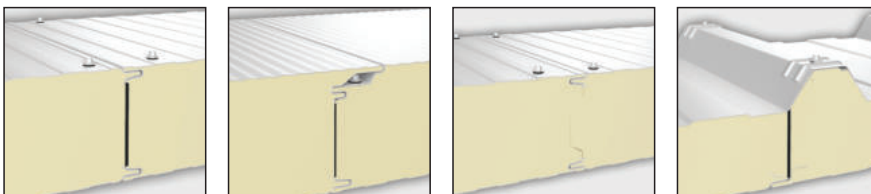
core	polyurethane PIR
panel thickness [mm]	40, 60, 80, 100, 120, 160
effective width [mm]	1050
total width [mm]	1070
min. panel length [m]	2,0
max. panel length [m]	18*
sheet metal thickness outside/inside [mm]	0.5/0.4 on request: 0.4–0.7 / 0.4–0.63
Lambda coefficient [W/mK]	0.022
type of external profiling	T40 trapezoid
type of internal profiling	T – trapezoid
coatings:	PS, polyurethane, HPS200
accessories	fastening systems, seals, finishing

We also offer coatings for interior cladding, which are suitable for chemically aggressive environments – see page 55.

Types of PIRTECH PANELS manufactured

name	STANDARD -ST	PLUS -PL	COOLING CH	ROOF
designation	PWS PIR-ST	PWS PIR-PL	PWS PIR-CH	PWD PIR

lock



STORM WASHER

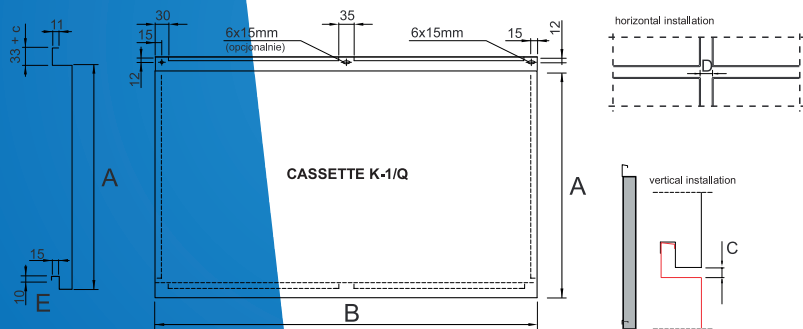
A storm washer should be used to connect the panels. The connection diagram is shown in detail in the PIRTECH panel catalogue.



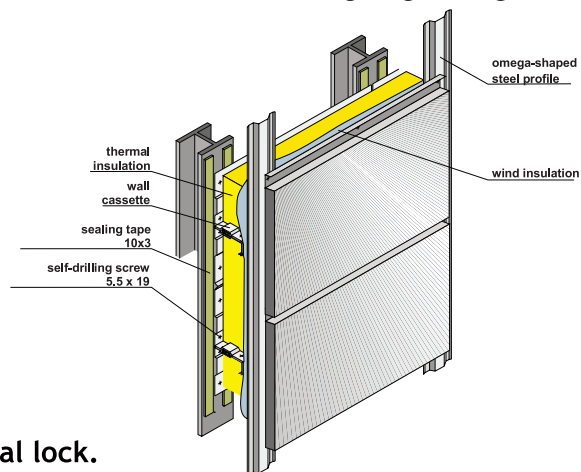
		FARM	FOOD SAFE
properties		<ul style="list-style-type: none"> • very good chemical resistance • good corrosion resistance • good formability • thermosetting paint • surface treatment and colouring: free of hexavalent chromium and heavy metals 	<ul style="list-style-type: none"> • very good UV resistance • good corrosion resistance • very good formability • thermosetting paint • surface treatment and colouring: free of hexavalent chromium and heavy metals
application		inner side of roofing cladding (single sheets or sandwich panels), for use in aggressive environments with animals and in outbuildings	use in harsh conditions: profiles, sandwich panels for roofing and cladding, building materials (tiles, gutters, etc.)
description	plate	35 microns	120 microns
	composition	front (inside of building): 15-micron primer + 20-micron top coat; back (outside of building): Granite® HD, Granite® HDS, Granite® HDX for double-sided finishing; 5- or 7-micron substrate sandwich panel coating	front (inside of building): 25-micron primer + 30-micron top coat; back (outside of building): 10- or 12-micron primer; available double-sided finish
	gloss (Gardner 60°)	30 GU; other gloss levels on request	30 GU; other gloss levels on request
	colours	various shades of white	RAL9010
	appearance	smooth	fine-grained
	temporary protection (optional)	self-adhesive film or heat-sealable film	not applicable
	performance	coating adhesion	≤ 1T
resistance to bending		≤ 2T	≤ 1.5T
impact resistance		18J	18J
scratch resistance		≥2kg	≥3kg
surface hardness 'pencil hardness'		HB to H	-
corrosion resistance: • salt spray test • corrosion resistance category		360 hours	700 hours Rc5
condensation resistance: • QCT test • corrosion protection category (interiors)		1500 hours CPI4	1500 hours CPI4
UV resistance: • QUV (UVA+H20) test (2000 hours) • UV resistance category		- -	ΔE ≤ 2; GR = 80% RUV4
reaction to fire classification (EN 13501-1)		A1	A1 for colour classes 1 to 4, A2 for metallic colours class 5
acid and alkali resistance		good or very good	good or very good
ammonia resistance		very good	very good
solvent resistance: • aliphatic and alcohols • ketones • aromatics		very good very good very good	very good low good or very good
mineral oil resistance:		very good	very good
automatic guarantee		- non-perforated sheets - aesthetic appearance (ΔE ≤ 3, - gloss retention ≥ 80%)	—
notes	the above performance characteristics refer to the Z275 metallic coating (guaranteed minimum)	the above performance characteristics refer to the Z275 metallic coating (guaranteed minimum)	

FACADE CEILING TILES

CASSETTE KA-1 and CASSETTE KS-1



Cross-section through lightweight wall



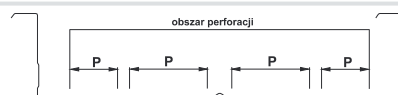
CASSETTE KA-2 - KS-2 available on request with diagonal lock.

Dimensioning method

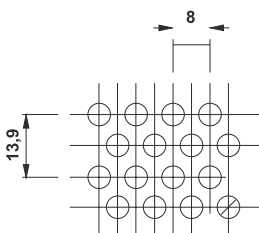
FACADE CEILING TILES CASSETTE KA-1 and CASSETTE

	A		B		C		D		E	
	cover width		cover length		horizontal joint width		vertical joint width		ceiling tile thickness	
thickness/material	min	max	min	max	min	max	min	max	min	max
steel										
1.20	120	800	200	2800	0	30	according to the design		30	60
1.25	120	800	200	2800	0	30	according to the design		30	60
1.50	120	1000	200	2800	0	30	according to the design		35	60
aluminium										
2.00	120	600	200	2400	0	50	according to the design		35	60
2.50	120	800	200	2400	0	50	according to the design		45	80
3.00	265	1000	200	2400	0	50	according to the design		50	80

WALL CASSETTES

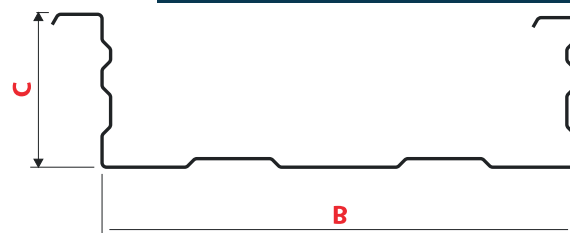


P - perforation width



Perforation type

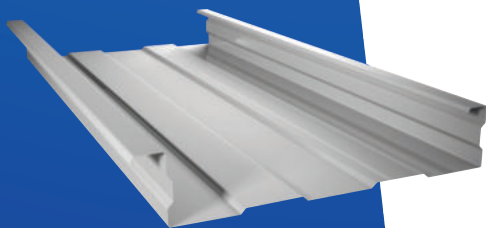
thickness [mm]	0.75 to 1.5
colour	RAL palette
coating	galvanised, PS
cassette length [m]	min. 1.5



B - total width
C - total height

500 mm
from 110 to 200 mm

600 mm
from 110 to 200 mm



We also offer a perforated version of the cassettes, which act as sound-absorbing components for indoor use.

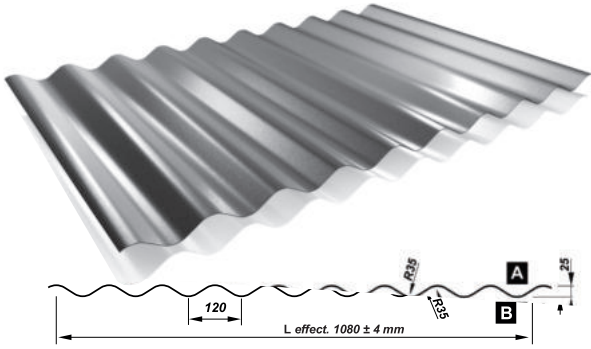
Wall cassettes are a material used to quickly implement investments. They are most often used for wall construction, especially in industrial and warehouse halls. Industrial facilities must meet strict requirements for safety, insulation properties, etc. Wall cassettes are dedicated to such tasks.

Florian Centrum offers wall cassettes in two basic widths:

- 500 mm
- 600 mm

FACADE CEILING TILES WALL CASSETTES

FACADE CORRUGATED PROFILE – PF25

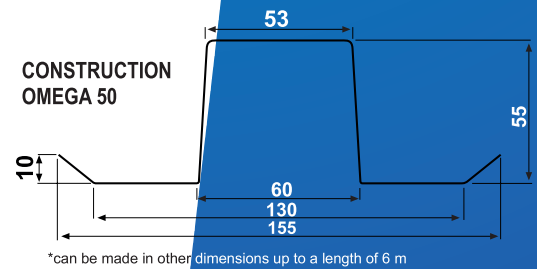
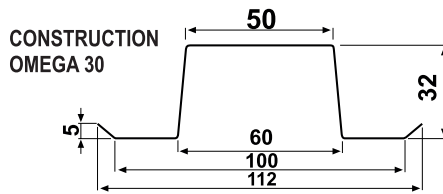
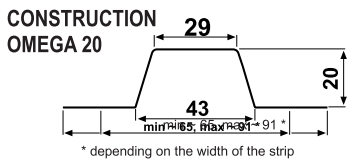


PLEASE NOTE: A facade profile is obtained when the side:
A is covered with a decorative coating
B is covered with primer varnish

profile height [mm]	25
charge width [mm]	1250
usable width [mm]	1080
total width [mm]	1114
max. sheet length [m]	6/7
min. sheet length [m]	0.5
thickness [mm]	0.5/0.7
perforation	yes
accessories	screws, seals anti-condensation non-woven fabric

Corrugated facade profiles combine modern design and technology with the company's traditional attention to the highest quality. Like trapezoidal profiles, they are widely used in the construction of residential houses, office and administrative buildings, warehouses, sports halls and wherever uniqueness and innovative design are important, in addition to aesthetics. Corrugated facade profiles can perfectly emphasise the unique character of the building, which is now as important as functionality and durability. The range includes the PF25 fine corrugated profile, which is ideal for smaller buildings or as a decorative element.

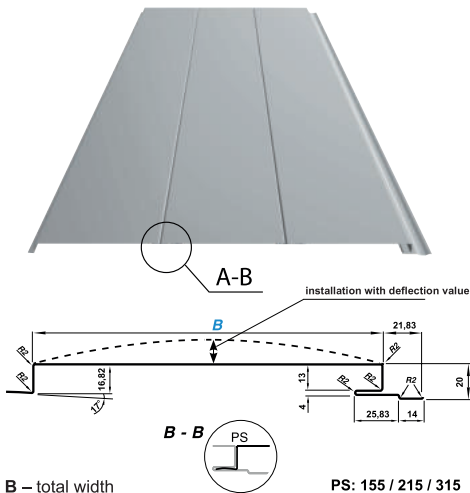
STEEL BATTENS



Thickness – 0.7–1.00 Coating – organic Lengths – 0.5 to 6 m

Cold-rolled omega-shaped profiles are made of galvanised tape. The offer includes battens of three heights and core thicknesses from 0.7 to 1.00 mm. This diversity allows them to be used in many types of structures.

- Advantages
- high rigidity and durability,
 - long-lasting and indestructible,
 - low construction weight,
 - ideal grate surface,
 - convenient and easy installation



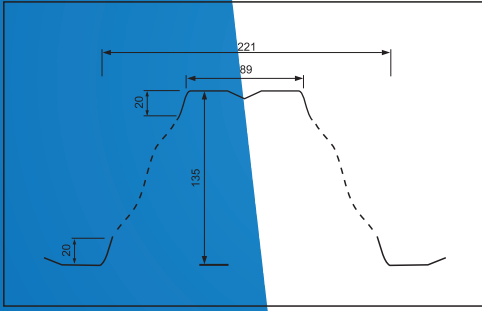
Thickness:	0.5; 0.7 mm
Width:	155 215 315 mm (sheet thickness at a width of 315 mm is 0.7 mm)
colour:	available colours listed at the end of the catalogue
Coating:	PS, polyurethane, BLACKMAT
Length:	panels can be of any length between 1 and 8 m with a thickness of 0.7 mm – 1–8 m with a thickness of 0.5 mm – 1–6 m

All products are ITB and PZH certified.

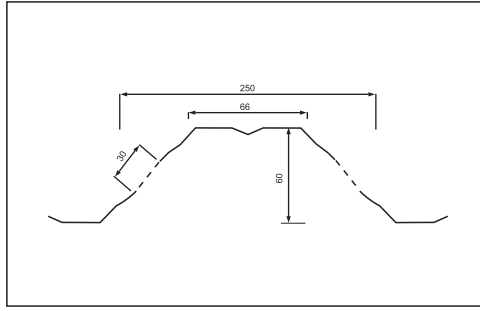
FACADE CORRUGATED PROFILE STEEL BATTENS FACADE PANEL

PERFORATION

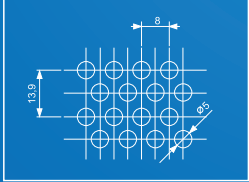
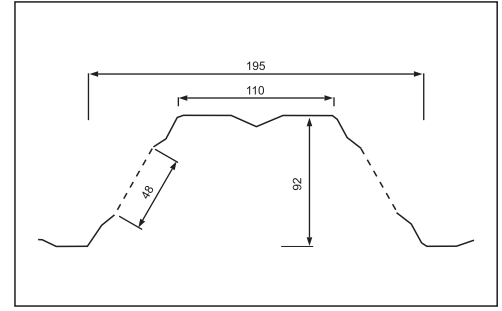
example of possible T135 perforation



example of possible T60P perforation



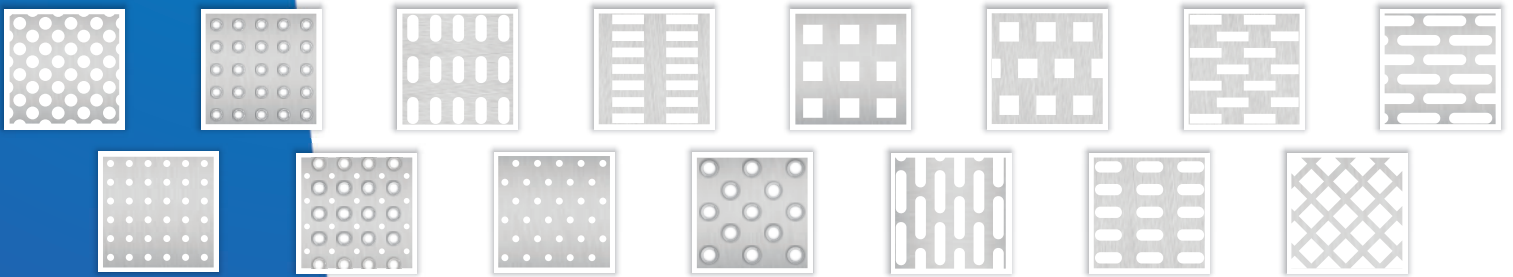
example of possible T92P perforation



The figures show the perforation pattern for selected trapezoidal sheet profiles. It is possible to make these perforations according to the customer's wishes.

- Tape width up to 1500 mm
- Sheet thickness up to 1.5 mm
- Hole diameter ∅ 3.2 mm, ∅ 4 mm, ∅ 5 mm

POSSIBLE HOLE BORING TYPES



ANTI-CONDENSATION NON-WOVEN FABRIC

Anti-condensation non-woven fabric is a special membrane that solves the problem of condensation inside buildings with uninsulated roofs. Once the condensation process starts, water droplets begin to collect on the underside of the roof. The non-woven fabric absorbs approx. 1000 g/m² of water, which collects in small gaps in the membrane. When it gets warmer, the water begins to evaporate back into the air and the membrane dries out again.

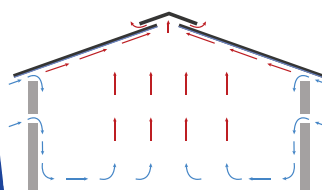
TECHNICAL REQUIREMENTS

When constructing a building with cold metal roofing, general building standards must be observed. Please pay attention to the following:

- The roof and all its parts must be designed, built and installed in accordance with the applicable building standards. In this context, ventilation of the panels along the ridge and under the eaves must be ensured. **The basic requirement for proper anti-condensation functioning is good ventilation of the sheets, which should be blown with air in the spaces created for this purpose – with inlets and outlets.**
- When covering newly constructed buildings, where water from fresh concreting or pebble plaster is still evaporating, additional ventilation should be provided. Due to the very high relative humidity, condensation may form. This is normal.



Adequate ventilation in an insulated building with air supply on the sides and air outlet through the roof ridge.



Adequate ventilation in a non-insulated building with air supply on the sides and air outlet through the roof ridge.

• If the roof of a building is constructed during frost periods, this leads to an additional source of moisture when the building is heated. This can cause dripping. To prevent this, it is necessary to ensure that the roof panels are stored correctly before installation or that there is adequate ventilation after installation.

• If possible, try to ensure that the temperature in the building does not drop to 0°C. If the whole building is affected by frost, it is important to consider how the space is heated. In this case, heat it up more quickly to reduce possible dripping.

• Prevent possible capillary rise in areas where layers of material overlap (less than 200 mm) and at the eaves. On monopitch roofs, prevent capillary rise at the eaves and roof ridge. This can be done with a gas or electric burner or a similar tool.

• Do not expose the material at the edges to direct sunlight or other weather conditions (strong wind, rain). This also applies to the storage of the material in its delivered state.

• Do not damage the surface of the fabric.

• When installing the roof, the roof panels must be dry on the non-woven side.

PERFORATIONS ANTICONDENSATION NON-WOVEN FABRIC

POLYESTER COATINGS

GLOSS



**10/30YEARS
GUARANTEE**

The 25 µm polyester paint layer provides effective protection against the destructive effects of UV radiation. The coating protects the roofing against corrosion and ensures colour retention for years. Products with a polyester gloss (PS) coating come with a guarantee of up to 30 years.

ULTRAMAT



**15/35-YEAR
GUARANTEE**

The ULTRAMAT matt polyester coating provides 35 µm of effective protection against external factors. Mainly used for plain and trapezoidal metal roofing tiles; it creates a modern, matt finish on the building. The warranty also applies to coarse-grained matt.

The same colour scheme is used for the **coarse-grained matt coating – 35 µm** matt polyester coating – availability of colours to be confirmed by the sales department.

TOPMAT



**20/35-YEAR
GUARANTEE**

TOPMAT is a matt polyester surface with a thickness of 35 µm. It features 20% higher resistance to discolouration and higher corrosion resistance than a normal polyester coating. Designed for panel metal roofing tiles.

SPECIAL COLOURS

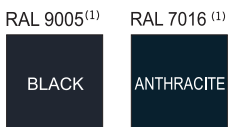


**15/40-YEAR
GUARANTEE**

Special colour: BLACKMAT-PS 45 µm
Special colours: RAL 8023, golden oak-PS 25 µm dark walnut

HYBRID COATING

PURMAX



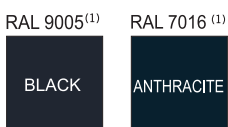
While supplies last

**20/40YEARS
GUARANTEE**

This coating is a combination of 25 µm polyester and 15 µm a very high resistance to mechanical damage thanks to innovative methods of curing varnishes with UV radiation.

POLYURETHANE COATINGS

PURLAK



PURMAT



**30/50-YEAR
GUARANTEE**

The PURLAK (gloss) and PURMAT (matt) polyurethane coatings are 50 micrometres thick and effectively protect the coating from the harmful effects of sunlight. The risk of corrosion is reduced, so the coating can be used even in areas with a highly aggressive environment.

⁽¹⁾ 0,5 mm thick, ⁽²⁾ 0,7 mm thick, ⁽³⁾ 1,0 mm thick

The colours in the catalogue are not true to life. The colour shades may vary depending on the coil from which the product was manufactured. If the customer requires a specific colour shade, please inform the salesperson when placing the order.

* The length of the warranty depends on the type of guarantee (aesthetic or technical). Conditions to be checked with the sales department of Florian Centrum

Florian Centrum Sp. z o.o.

ul. Metalowa 11A

99-300 Kutno

Sales Department

Tel.: +48 24 355 14 65

Fax: +48 24 355 14 66

e-mail: florian@floriancentrum.com.pl

floriancentrum.com.pl



Like us on
Facebook!



YouTube



Follow us
CONSTRUCTION

LinkedIn